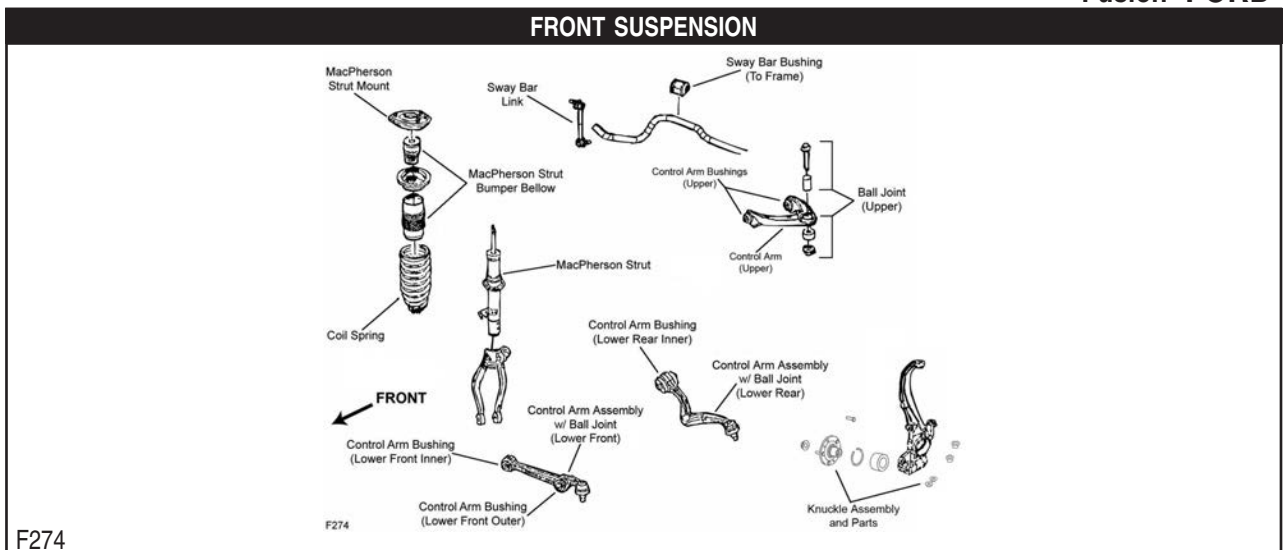


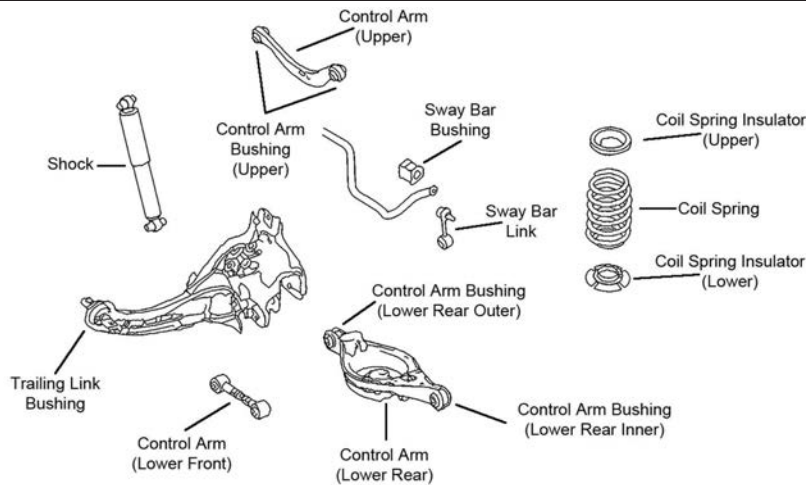
REAR SUSPENSION (Cont.)				
Year	Model/Application	Part	P/C Qty	Figure
Sway Bar Bushing				
2011-2008	Except Performance Package Performance Package	To Frame To Frame	K201366 K80152	1 1 R030
2007-2000	18mm Sway Bar Diameter	To Frame	K80152	1 R030
Sway Bar Link				
2017	Electric, S, Titanium, (Improves Upon OE Design)		K750465 ‡	2 R202
2017-2016	Naturally Aspirated, SE, (Improves Upon OE Design)		K750465 ‡	2 R202
2017-2013	ST, (Greaseable Socket Reduces Corrosion/Wear)		K750748 ‡	2 R203
2016	Electric, S, SE, SFE, Titanium, (Improves Upon OE Design)		K750465 ‡	2 R202
2015	Electric, S, SE, SE Sport, SFE, Titanium, (Improves Upon OE Design)		K750465 ‡	2 R202
2014	Electric, S, SE, Titanium, (Improves Upon OE Design)		K750465 ‡	2 R202
2013	S, SE, Titanium, (Improves Upon OE Design)		K750465 ‡	2 R202
2012	Electric, S, SE, SEL, SFE, Titanium, (Improves Upon OE Design)		K750465 ‡	2 R202
Sway Bar Repair Kit				
2011-2005	(Includes Polyurethane Bushings And Solid Metal Sleeve For Enhanced Performance. Barrel Nut Allows For Easier Installation.)		K700525 ‡	2 R030
Trailing Link Bushing				
2014-2013	S, SE, ST, Titanium		K200064	2 R202, R203
2012	S, SE, SEL, SFE, Titanium		K200064	2 R202
2011-2000			K200064	2 R030
Wheel Hub & Bearing Assembly				
2017	121(2.0L), Naturally Aspirated, Except Automated Parking System 1999cc(2.0L), Turbocharged/Intercooled, Except Automated Parking System		512466 512466	2 2
2017-2016	121(2.0L), Naturally Aspirated, Active Park Assist 138(2.3L), Twin Scroll Turbocharged/intercooled		512465 512591	2 2
2017-2013	Electric		512599	2
2016	61(1.0L), Turbocharged, Active Park Assist 61(1.0L), Turbocharged, Except Active Park Assist 121(2.0L), Naturally Aspirated, Except Active Park Assist 1999cc(2.0L), Turbocharged/Intercooled, Active Park Assist 1999cc(2.0L), Turbocharged/Intercooled, Except Active Park Assist		512465 512466 512466 512465 512466	2 2 2 2 2
2015-2013	Flex Fuel, Active Park Assist Flex Fuel, Except Active Park Assist Gasoline, Active Park Assist Gasoline, Except Active Park Assist		512465 512466 512465 512466	2 2 2 2
2012	Active Park Assist Except Active Park Assist		512465 512466	2 2
Wheel Hub Repair Kit				
2007-2001	Rear Disc, 4 Wheel ABS		521002	2

Fusion-FORD



FORD-Fusion (Cont.)

FRONT SUSPENSION (Cont.)



R154

Year	Model/Application	Part	P/C Qty	Figure	
Ball Joint					
2012-2009	(Powdered Metal Gusher Brg. For Better Lubrication)	Upper	K500041 ‡	2 F274	
2012-2007	+/- 1 Degree Camber/Caster, (Adjustable, Greaseable Socket Reduces Corrosion/Wear)	Upper	K500013 ‡	2 F274	
2008-2007	Front Wheel Drive, (Powdered Metal Gusher Brg. For Better Lubrication)	Upper	K500041 ‡	2 F274	
Control Arm					
2012-2010	(R-Series)	Lower Front	RK641279	2 R154	
Control Arm Bushing					
2015-2013		Lower Front	K201329	2	
2012-2008	(High Quality Elastomer For Durability And Performance)	Lower Front Inner	K200252 ‡	2 F274	
2012-2006	(High Quality Elastomer For Durability And Performance)	Lower Front Outer	K200251 ‡	2 F274	
		Lower Rear Inner	K200250 ‡	2 F274	
2010-2006	(High Quality Elastomer For Durability And Performance)	Upper	K200249 ‡	2 F274	
2007-2006	From 8/30/06, (High Quality Elastomer For Durability And Performance)	Lower Front Inner	K200252 ‡	2 F274	
Control Arm with Ball Joint					
2016	Thru 8/24/15, (R-Series)	Left Lower	RK623001	1	
		Right Lower	RK623000	1	
2015-2013	(R-Series)	Left Lower	RK623001	1	
		Right Lower	RK623000	1	
2012-2008	(Contains Bushings, R-Series)	Lower Front	RK620149	2 F274	
2012-2006	(R-Series)	Left Upper	RK620636	1 F274	
		Right Upper	RK620635	1 F274	
	(Contains Bushing, OE Ball Joint Separator Tool And Adaptor Required, Greaseable Socket Reduces Corrosion/Wear)		Left Rear Lower	CK620278 ‡	1 F274
	(OE Ball Joint Separator Tool And Adaptor Required, R-Series)		Left Rear Lower	RK620492	1 F274
	(Contains Bushing, OE Ball Joint Separator Tool And Adaptor Required, Greaseable Socket Reduces Corrosion/Wear)		Right Rear Lower	CK620277 ‡	1 F274
	(OE Ball Joint Separator Tool And Adaptor Required, R-Series)		Right Rear Lower	RK620493	1 F274
	(R-Series)		Right Rear Lower	RK621250	1 F274
2007	From 8/30/06, (Contains Bushings, R-Series)	Lower Front	RK620149	2 F274	
		Lower Front	RK620148	2 F274	
Complete Knuckle Assembly					
2012-2006	(Contains Snap Ring, Bearing, Knuckle, 2 Knuckle Inserts, Hub Assembly, Backing Plate And Axle Nut)	Left	LK011 ‡	1 F274	
		Right	LK012 ‡	1 F274	
Steering Knuckle Insert					
2012-2006	(Design Allows Ease Of Installation)	Front	K150403	2 F274	
		Rear	K150349 ‡	2 F274	
Strut and Spring Assembly					
2012-2010	4 Cyl		ST8688	2 F274	
		V6 Cyl	ST8685	2 F274	
2009-2006	4 Cyl		ST8687	2 F274	
		V6 Cyl	ST8683	2 F274	
Strut Bumper Bellows					
2018-2013	(Replacement Type, Contains Bumper)		K90460	2	
2012-2006	(Design Allows Ease Of Installation)		K160285 ‡	2 F274	

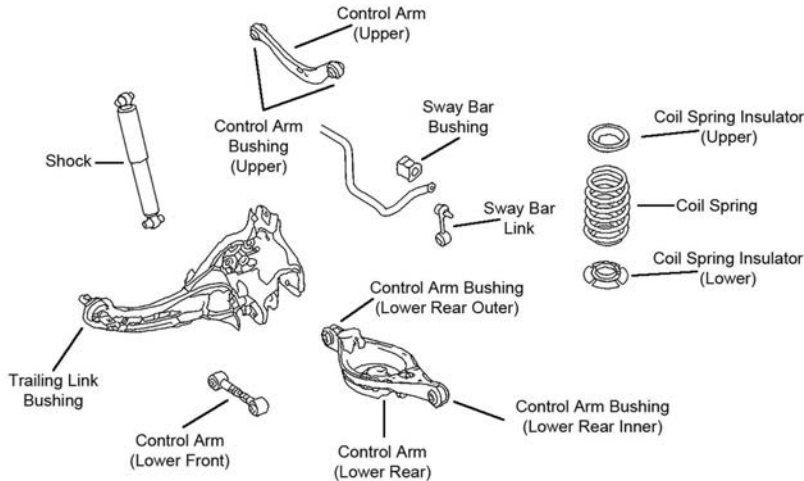
FRONT SUSPENSION (Cont.)				
Year	Model/Application	Part	P/C Qty	Figure
Strut Mount				
2012-2006	(Contains Bearing And Spring Seat, Superior Rubber To Steel Bonding For Durability)	K160103 ‡	2	F274
Sway Bar Bushing				
2012-2010	(Split Design For Easier Installation)	K200627 ‡	2	F274
2009	All Wheel Drive, Thru 2/3/09, (Reduces Noise) To Frame	K200296 ‡	1	F274
2009-2007	Front Wheel Drive, (Split Design For Easier Installation)	K200627 ‡	2	F274
2008-2007	All Wheel Drive, (Reduces Noise) To Frame	K200296 ‡	1	F274
Sway Bar Link				
2017-2013	(Greaseable Socket Reduces Corrosion/Wear)	K750740 ‡	2	
2012-2011	(Full Ball Stud Provides 360 Degrees Of Smooth Rotation)	K750415 ‡	2	F274
2010	Hybrid, S, SE, SEL, (Full Ball Stud Provides 360 Degrees Of Smooth Rotation) Sport, (Powdered Metal Gusher Brg. For Better Lubrication) Sport, (Powdered Metal Gusher Brg. For Better Lubrication)	Left K750415 ‡ Right K80251 ‡ K80250 ‡	2 1 1	F274 F274 F274
2009-2006	(Powdered Metal Gusher Brg. For Better Lubrication) (Powdered Metal Gusher Brg. For Better Lubrication)	Left K80251 ‡ Right K80250 ‡	1 1	F274 F274
Wheel Hub & Bearing Assembly				
2017	1499cc(1.5L) 1999cc(2.0L) 2488cc(2.5L) 164(2.7L)	512498 512498 512498 513394	2 2 2 2	
2016-2013		512498	2	
STEERING				
<p>S330</p>				
<p>S331</p>				
Year	Model/Application	Part	P/C Qty	Figure
Rack & Pinion Boot Kit				
2012-2010	3496cc(3.5L)	K150350	2	S330

FORD-Fusion (Cont.)

STEERING (Cont.)

Year	Model/Application	Part	P/C Qty	Figure	
Rack & Pinion Boot Kit					
2009-2006		K150350	2	S330	
Tie Rod End					
2017-2013		Left Outer Right Outer Inner	ES801110 ES801109 EV801122	1 1 2	
2012-2010	2488cc(2.5L), (Greaseable Socket Reduces Corrosion/Wear) 2488cc(2.5L), (Full Ball Stud Provides 360 Degrees Of Smooth Rotation) 2967cc(3.0L), (Greaseable Socket Reduces Corrosion/Wear) 2967cc(3.0L), (Greaseable Socket Reduces Corrosion/Wear) 2967cc(3.0L), (Full Ball Stud Provides 360 Degrees Of Smooth Rotation) 3496cc(3.5L), (Design Allows Ease Of Installation) 3496cc(3.5L), (Powdered Metal Gusher Brg. For Better Lubrication) 3496cc(3.5L), (Design Allows Ease Of Installation) 3496cc(3.5L), (Full Ball Stud Provides 360 Degrees Of Smooth Rotation)	Left Outer Right Outer Inner Left Outer Right Outer Inner Left Outer Left Outer Right Outer Inner	ES800798 ‡ ES800797 ‡ EV800774 ‡ ES800798 ‡ ES800797 ‡ EV800774 ‡ ES800781 ‡ ES800102 ‡ ES800782 ‡ EV800531 ‡	1 1 2 1 1 2 1 1 1 2	S331 S331 S331 S331 S331 S330 S330 S330 S330 S330
2009-2006	(Powdered Metal Gusher Brg. For Better Lubrication) (Powdered Metal Gusher Brg. For Better Lubrication) (Full Ball Stud Provides 360 Degrees Of Smooth Rotation)	Left Outer Right Outer Inner	ES800102 ‡ ES800101 ‡ EV800531 ‡	1 1 2	S330 S330 S330

REAR SUSPENSION



R154

Year	Model/Application	Part	P/C Qty	Figure	
Control Arm					
2017-2013	Plus Or Minus 2 Degree Camber, (Threaded Type, R-Series) Front Wheel Drive, Plus Or Minus 2 Degree Camber, (Slotted Type, R-Series)	Upper Upper	RK100212 RK100352	2 2	
2012-2006	(R-Series) Plus Or Minus 2 Degree Camber, (Adjustable, R-Series)	Upper Upper	RK641942 RK100171	2 2	R154 R154
2009-2006	(Lateral Link, R-Series)	Lower Front	RK641279	2	R154
Control Arm Bushing					
2017	Front Wheel Drive Front Wheel Drive	Upper Front Upper Rear	K201328 K201327	2 2	
2017-2013		Arm To Knuckle, Lower Front To Frame, Lower Front	K201606 K201607	2 2	
2016-2015		Upper Rear	K201327	2	
2015-2014		Upper Front	K201328	2	
2014-2013	Front Wheel Drive	Upper Rear	K201327	2	
2013	Front Wheel Drive	Upper Front	K201328	2	
Sway Bar Bushing					
2012-2010	All Wheel Drive, 17" Wheels, (Reduces Noise) Front Wheel Drive, 16" Wheels, (Reduces Noise) Front Wheel Drive, 18" Wheels, (Reduces Noise)	To Frame To Frame To Frame	K200298 ‡ K200297 ‡ K200298 ‡	1 1 1	R154 R154 R154
2009	All Wheel Drive, From 2/4/09, 17" Wheels, (Reduces Noise) All Wheel Drive, Thru 2/3/09, (Reduces Noise) Front Wheel Drive, From 2/4/09, 16" Wheels, (Reduces Noise) Front Wheel Drive, From 2/4/09, 18" Wheels, (Reduces Noise) Front Wheel Drive, Thru 2/3/09, (Reduces Noise)	To Frame To Frame To Frame To Frame To Frame	K200298 ‡ K200298 ‡ K200297 ‡ K200298 ‡ K200297 ‡	1 1 1 1 1	R154 R154 R154 R154 R154
2008-2007	All Wheel Drive, (Reduces Noise)	To Frame	K200298 ‡	1	R154

REAR SUSPENSION (Cont.)				
Year	Model/Application	Part	P/C Qty	Figure
Sway Bar Bushing				
2008-2007 (Cont.)	Front Wheel Drive, (Reduces Noise)	To Frame	K200297 ‡	1 R154
Sway Bar Link				
2017-2013	(Design Allows Ease Of Installation)		K750744 ‡	2
2012-2006			K750029	2 R154
Wheel Hub & Bearing Assembly				
2017-2015	Front Wheel Drive, (Contains ABS Cap)		512497	2
2017-2014	All Wheel Drive		512498	2
2014	Front Wheel Drive, From 1/18/14, (Contains ABS Cap)		512497	2
	Front Wheel Drive, Thru 1/17/14		512498	2
2013			512498	2
2012-2008	Front Wheel Drive		512271	2
2007-2006	Front Wheel Drive, 4 Wheel ABS		512271	2
	Front Wheel Drive, Non ABS		512272	2

FRONT SUSPENSION				
F263				
Year	Model/Application	Part	P/C Qty	Figure
Ball Joint				
2007-2003	(Powdered Metal Gusher Brg. For Better Lubrication, New Pre-Installed Integral Dust Boot Eases Installation, New And Original Designs Can Be Installed)	Lower	K80141 ‡	2 F263
Strut and Spring Assembly				
2007-2003			ST8620	2 F263
Strut Mounting Kit				
2007-2003	(Contains Two Bushings And Two Washers)		K80145	2 F263
Sway Bar Link				
2007-2003	(Link Only, Powdered Metal Gusher Brg. For Better Lubrication)		K80140 ‡	2 F263