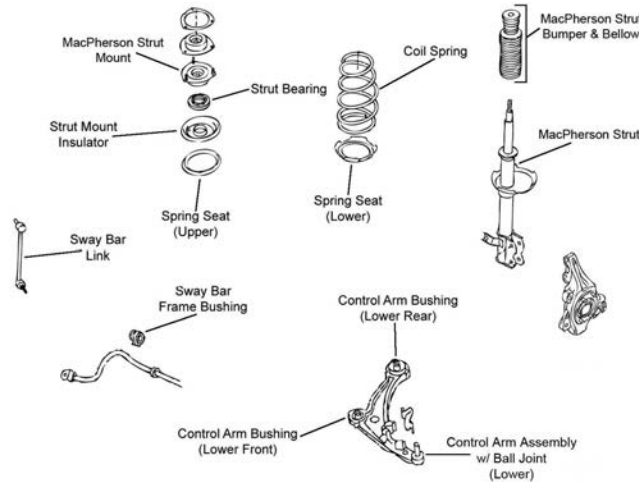


**FRONT SUSPENSION**



F346

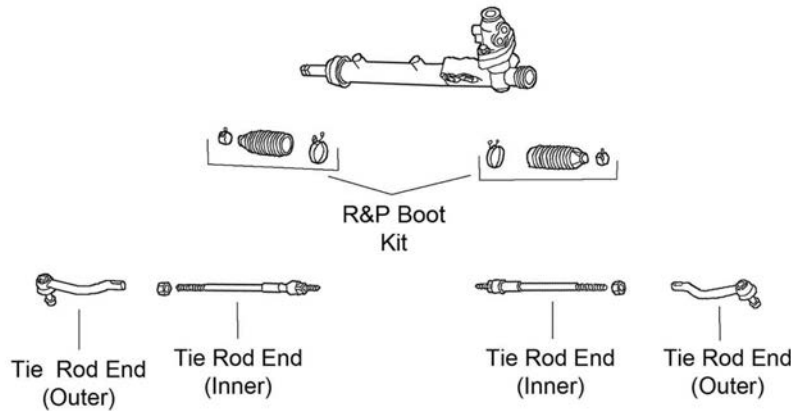
| Year                                    | Model/Application  | Part        | P/C Qty   | Figure |      |
|---|--|-------------|-----------|--------|------|
| <b>Control Arm with Ball Joint</b>      |  |             |           |        |      |
| 2018-2015                               | (R-Series)   | Left Lower  | RK622839  | 1      | F346 |
|   | (R-Series)   | Right Lower | RK622838  | 1      | F346 |
| 2013                                    | 2.5S, 2 Dr. Coupe, (R-Series)  | Left Lower  | RK620195  | 1      | F346 |
|   | 2.5S, 2 Dr. Coupe, (R-Series)  | Right Lower | RK620196  | 1      | F346 |
| 2012-2007                               | (R-Series)   | Left Lower  | RK620195  | 1      | F346 |
|   | (R-Series)   | Right Lower | RK620196  | 1      | F346 |
| <b>Strut and Spring Assembly</b>        |  |             |           |        |      |
| 2012-2007                               |  | Left        | ST8659L   | 1      | F346 |
|   |  | Right       | ST8659R   | 1      | F346 |
| <b>Strut Bumper Bellows</b>             |  |             |           |        |      |
| 2017-2007                               | (Contains Bumper)  |             | K90461    | 2      | F346 |
| <b>Strut Mount</b>                      |  |             |           |        |      |
| 2017-2014                               | (Contains Bearing)   |             | K160421   | 2      | F346 |
| 2013                                    | 2 Dr. Coupe, (Contains Bearing, Superior Rubber To Steel Bonding For Durability) |             | K160232 ‡ | 2      | F346 |
|   | 4 Dr. Sedan, (Contains Bearing)  |             | K160421   | 2      | F346 |
| 2012-2007                               | (Contains Bearing, Superior Rubber To Steel Bonding For Durability)              |             | K160232 ‡ | 2      | F346 |
| <b>Sway Bar Bushing</b>                 |  |             |           |        |      |
| 2013                                    | 2.5S, 2 Dr. Coupe, (Reduces Noise)   | To Frame    | K200299 ‡ | 1      | F346 |
| 2012                                    | (Reduces Noise)  | To Frame    | K200299 ‡ | 1      | F346 |
| 2011-2007                               | 23.2mm Sway Bar Diameter, (Reduces Noise)  | To Frame    | K200299 ‡ | 1      | F346 |
|   | 24.4mm Sway Bar Diameter, (Reduces Noise)  | To Frame    | K200300 ‡ | 1      | F346 |
| <b>Sway Bar Link</b>                    |  |             |           |        |      |
| 2018-2014                               | (Powdered Metal Gusher Brg. For Better Lubrication)                              | Left        | K750282 ‡ | 1      | F346 |
|   | (Powdered Metal Gusher Brg. For Better Lubrication)                              | Right       | K750283 ‡ | 1      | F346 |
| 2013                                    | 4 Dr. Sedan, (Powdered Metal Gusher Brg. For Better Lubrication)                 | Left        | K750282 ‡ | 1      | F346 |
|   | 4 Dr. Sedan, (Powdered Metal Gusher Brg. For Better Lubrication)                 | Right       | K750283 ‡ | 1      | F346 |
| <b>Wheel Hub &amp; Bearing Assembly</b> |  |             |           |        |      |
| 2018-2016                               |  |             | 513296    | 2      |      |
| 2015-2013                               | (32 Tooth Spline)  |             | 513296    | 2      |      |
| 2012-2008                               | 2488cc(2.5L), (29 Splines)   |             | 513294    | 2      |      |
| 2012-2007                               | 3498cc(3.5L), (32 Tooth Spline)  |             | 513296    | 2      |      |
| 2007                                    | 2488cc(2.5L), 4 Wheel ABS, (29 Splines)  |             | 513294    | 2      |      |

**NISSAN-Altima (Cont.)**

**STEERING**



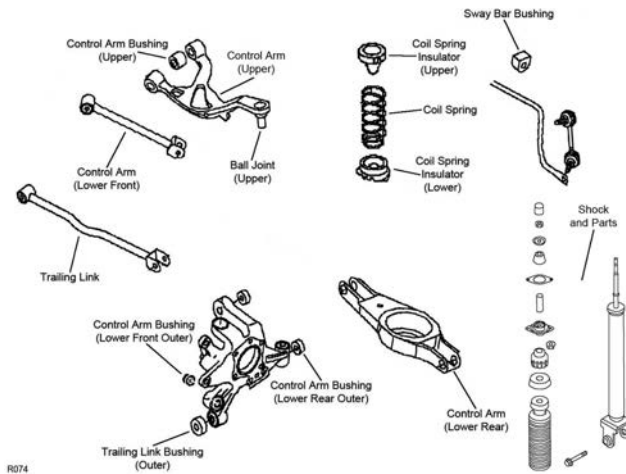
S317



S459

| Year                              | Model/Application   | Part        | P/C Qty    | Figure |
|-----------------------------------|---|-------------|------------|--------|
| <b>Rack &amp; Pinion Boot Kit</b> |   |             |            |        |
| 2013                              | 2 Dr. Coupe   | Left        | K150321    | 1 S317 |
|                                   |   | Right       | K150293    | 1 S317 |
| 2012                              |   | Left        | K150321    | 1 S317 |
|                                   |   | Right       | K150293    | 1 S317 |
| 2011                              | 2.5, 2.5S, 3.5S, 3.5SR  | Left        | K150321    | 1 S317 |
|                                   |   | Right       | K150293    | 1 S317 |
| 2010                              | 2.5, 2.5S, 3.5S, 3.5SL, 3.5SR   | Left        | K150321    | 1 S317 |
|                                   |   | Right       | K150293    | 1 S317 |
| 2009-2008                         | 2.5, 2.5S, 3.5S, 3.5SE, 3.5SL   | Left        | K150321    | 1 S317 |
| 2009-2007                         | 2.5, 2.5S, 3.5S, 3.5SE, 3.5SL   | Right       | K150293    | 1 S317 |
| 2007                              | 2.5, 2.5S, 3.5S, 3.5SE, 3.5SL   | Left        | K150317    | 1 S317 |
| <b>Tie Rod End</b>                |   |             |            |        |
| 2018-2014                         | (Powdered Metal Gusher Brg. For Better Lubrication)                                     | Left Outer  | ES801197 ‡ | 1 S459 |
|                                   |   | Right Outer | ES801196 ‡ | 1 S459 |
|                                   |   | Inner       | EV801066 ‡ | 2 S459 |
| 2013                              | 2 Dr. Coupe, (Design Allows Ease Of Installation)                                       | Left Outer  | ES800357 ‡ | 1 S317 |
|                                   |   | Right Outer | ES800358 ‡ | 1 S317 |
|                                   |   | Inner       | EV800356 ‡ | 2 S317 |
|                                   |   | Left Outer  | ES801197 ‡ | 1 S459 |
|                                   |   | Right Outer | ES801196 ‡ | 1 S459 |
| 2012                              | (Design Allows Ease Of Installation)  | Left Outer  | ES800357 ‡ | 1 S317 |
|                                   |   | Right Outer | ES800358 ‡ | 1 S317 |
| 2011                              | 2.5, 2.5S, 3.5S, 3.5SR, (Design Allows Ease Of Installation)                            | Left Outer  | ES800357 ‡ | 1 S317 |
|                                   |   | Right Outer | ES800358 ‡ | 1 S317 |
|                                   |   | Inner       | EV800356 ‡ | 2 S317 |
| 2011-2007                         | Hybrid, (Design Allows Ease Of Installation)  | Left Outer  | ES800512 ‡ | 1 S317 |
|                                   |   | Right Outer | ES800511 ‡ | 1 S317 |
| 2010                              | 2.5, 2.5S, 3.5S, 3.5SL, 3.5SR, (Design Allows Ease Of Installation)                     | Left Outer  | ES800357 ‡ | 1 S317 |
|                                   |   | Right Outer | ES800358 ‡ | 1 S317 |
|                                   |   | Inner       | EV800356 ‡ | 2 S317 |
| 2009                              | 2.5, 2.5S, 3.5SE, 3.5SL, (Full Ball Stud Provides 360 Degrees Of Smooth Rotation)       | Inner       | EV800356 ‡ | 2 S317 |
| 2009-2007                         | 2.5, 2.5S, 3.5S, 3.5SE, 3.5SL, (Design Allows Ease Of Installation)                     | Left Outer  | ES800357 ‡ | 1 S317 |
|                                   |   | Right Outer | ES800358 ‡ | 1 S317 |
| 2008-2007                         | 2.5, 2.5S, 3.5S, 3.5SE, 3.5SL, (Full Ball Stud Provides 360 Degrees Of Smooth Rotation) | Inner       | EV800356 ‡ | 2 S317 |

## REAR SUSPENSION



R074

| Year                               | Model/Application  | Part             | P/C Qty   | Figure |
|------------------------------------|--|------------------|-----------|--------|
| <b>Control Arm</b>                 |  |                  |           |        |
| 2017-2014                          | 2-1/2 Degree Camber Plus Or Minus, (Adjustable, R-Series)                                      | Upper            | RK100342  | 2      |
| 2013                               | 2 Dr. Coupe, Plus Or Minus 3 Degree Camber, Plus Or Minus 2 Degree Toe, (Adjustable, R-Series) | Lower Front      | RK100123  | 2      |
|                                    |  | Upper            | RK100342  | 2      |
| 2013-2007                          | (R-Series)   | Lower Front      | RK643060  | 2      |
| 2012-2007                          | Plus Or Minus 3 Degree Camber, Plus Or Minus 2 Degree Toe, (Adjustable, R-Series)              | Lower Front      | RK100123  | 2      |
| 2009-2007                          | (R-Series)   | Lower Rear       | RK642563  | 2      |
| <b>Control Arm Bushing</b>         |  |                  |           |        |
| 2013                               | 2.5S, 2 Dr. Coupe  | Lower Rear Outer | K200970   | 2      |
| 2012                               | 2.5S, 3.5S, 3.5SR  | Lower Rear Outer | K200970   | 2      |
| 2011                               | 2.5S, 3.5S, 3.5SR, Hybrid  | Lower Rear Outer | K200970   | 2      |
| 2010-2007                          |  | Lower Rear Outer | K200970   | 2      |
| <b>Control Arm with Ball Joint</b> |  |                  |           |        |
| 2013                               | 2 Dr. Coupe, (R-Series)  | Left Upper       | RK622766  | 1      |
|                                    |  | Right Upper      | RK622765  | 1      |
| 2012-2007                          | (R-Series)   | Left Upper       | RK622766  | 1      |
|                                    |  | Right Upper      | RK622765  | 1      |
| <b>Strut Bumper Bellows</b>        |  |                  |           |        |
| 2017-2013                          | (Design Allows Ease Of Installation)   |                  | K160285 ‡ | 2      |
| 2012-2007                          | (Design Allows Ease Of Installation)   |                  | K160285 ‡ | 2      |
| <b>Strut Mounting Kit</b>          |  |                  |           |        |
| 2017-2013                          |  |                  | K160317   | 2      |
| 2012-2002                          |  |                  | K160317   | 2      |
| <b>Sway Bar Bushing</b>            |  |                  |           |        |
| 2013                               | 2488cc(2.5L), 2 Dr. Coupe, (Reduces Noise)   | To Frame         | K200301 ‡ | 1      |
| 2012                               | 3498cc(3.5L), (Reduces Noise)  | To Frame         | K200303 ‡ | 1      |
| 2012-2009                          | 2488cc(2.5L), (Reduces Noise)  | To Frame         | K200301 ‡ | 1      |
| 2011-2010                          | 3498cc(3.5L), 3.5SR, (Reduces Noise)   | To Frame         | K200303 ‡ | 1      |
| 2009-2008                          | 3498cc(3.5L), 3.5SE, (Reduces Noise)   | To Frame         | K200303 ‡ | 1      |
| 2008                               | 2488cc(2.5L), 16mm Sway Bar Diameter, (Reduces Noise)  | To Frame         | K200301 ‡ | 1      |
|                                    | 2488cc(2.5L), 17mm Sway Bar Diameter, (Reduces Noise)  | To Frame         | K200302 ‡ | 1      |
| 2007                               | 2488cc(2.5L), (Reduces Noise)  | To Frame         | K200302 ‡ | 1      |
|                                    | 3498cc(3.5L), (Reduces Noise)  | To Frame         | K200303 ‡ | 1      |
| <b>Sway Bar Link</b>               |  |                  |           |        |
| 2018                               | 2.5, 2.5S, 2.5SL, 2.5SV, 3.5SL, (Improves Upon OE Design)                                      | Left             | K750662 ‡ | 1      |
|                                    |  | Right            | K750663 ‡ | 1      |
| 2017-2014                          | (Improves Upon OE Design)  | Left             | K750662 ‡ | 1      |
|                                    |  | Right            | K750663 ‡ | 1      |
| 2013                               | 2 Dr. Coupe, (Powdered Metal Gusher Brg. For Better Lubrication)                               | Right            | K750256 ‡ | 1      |
|                                    |  | Left             | K750255 ‡ | 1      |
|                                    |  | Left             | K750662 ‡ | 1      |
|                                    |  | Right            | K750663 ‡ | 1      |
| 2012-2007                          | (Powdered Metal Gusher Brg. For Better Lubrication)  | Left             | K750256 ‡ | 1      |

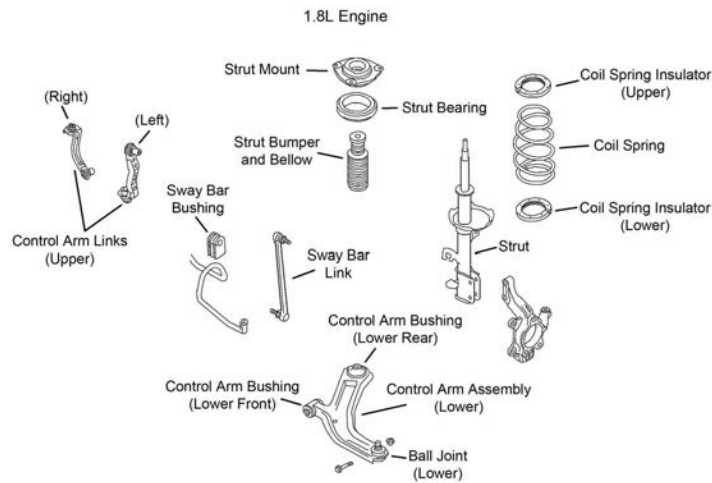
## NISSAN-Altima (Cont.)

### REAR SUSPENSION (Cont.)

| Year                                    | Model/Application                                   | Part  | P/C Qty          | Figure |      |
|---|---|-------|------------------|--------|------|
| <b>Sway Bar Link</b>                    |   |       |                  |        |      |
| 2012-2007 (Cont.)                       | (Powdered Metal Gusher Brg. For Better Lubrication) | Right | K750255 ‡        | 1      | R074 |
| <b>Trailing Link</b>                    |   |       |                  |        |      |
| 2013-2011                               | 2 Dr. Coupe, (R-Series)                             |       | RK642893         | 2      | R074 |
| <b>Wheel Hub &amp; Bearing Assembly</b> |   |       |                  |        |      |
| 2018-2008                               |   |       | 512388           | 2      |      |
| 2007                                    | 4 Wheel ABS<br>Non ABS                              |       | 512388<br>512389 | 2<br>2 |      |

## NISSAN-Cube

### FRONT SUSPENSION



F537

| Year                                    | Model/Application  | Part                      | P/C Qty                | Figure |              |
|---|--|---------------------------|------------------------|--------|--------------|
| <b>Control Arm with Ball Joint</b>      |  |                           |                        |        |              |
| 2014-2009                               | (R-Series)<br>(R-Series)   | Left Lower<br>Right Lower | RK620567<br>RK620566   | 1<br>1 | F537<br>F537 |
| <b>Strut Bumper Bellows</b>             |  |                           |                        |        |              |
| 2014-2009                               |  |                           | K150274                | 2      | F537         |
| <b>Strut Mount</b>                      |  |                           |                        |        |              |
| 2014-2009                               | (Contains Bearing, Superior Rubber To Steel Bonding For Durability)<br>(Contains Bearing, Superior Rubber To Steel Bonding For Durability) | Left<br>Right             | K160239 ‡<br>K160240 ‡ | 1<br>1 | F537<br>F537 |
| <b>Sway Bar Bushing</b>                 |  |                           |                        |        |              |
| 2014-2009                               |  | To Frame                  | K201577                | 1      | F537         |
| <b>Sway Bar Link</b>                    |  |                           |                        |        |              |
| 2014-2009                               | (Greaseable Socket Reduces Corrosion/Wear)   |                           | K750098 ‡              | 2      | F537         |
| <b>Wheel Hub &amp; Bearing Assembly</b> |  |                           |                        |        |              |
| 2014-2009                               |  |                           | 513344                 | 2      |              |