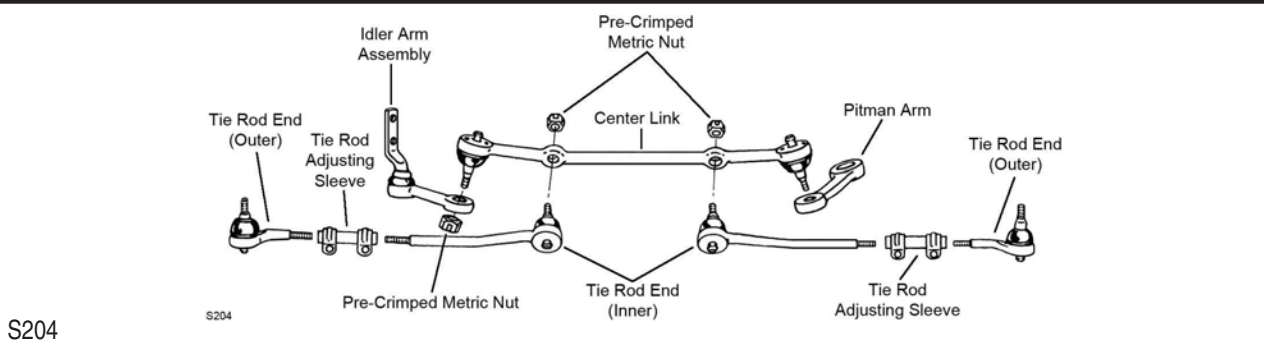


CHEVROLET-Monza (Cont.)

FRONT SUSPENSION (Cont.)

| Year | Model/Application | Part | P/C Qty | Figure |
|----------------------------|--|----------|-------------------------------|----------------------------|
| Ball Joint | | | | |
| 1980-1975 | (Powdered Metal Gusher Brg. For Better Lubrication) | Lower | K6157 ‡ | 2 F117 |
| Sway Bar Bushing | | | | |
| 1980-1975 | 1" Sway Bar Diameter | To Frame | K5253 | 1 F117 |
| | 15/16" Sway Bar Diameter | To Frame | K5241 | 1 F117 |
| Sway Bar Repair Kit | | | | |
| 1980-1975 | (Heavy Duty Design) (Includes Polyurethane Bushings And Solid Metal Sleeve For Enhanced Performance. Barrel Nut Allows For Easier Installation.) (Standard Design) | | K6630 ‡ K700532 ‡ K5252 | 2 F117 2 F117 2 F117 |

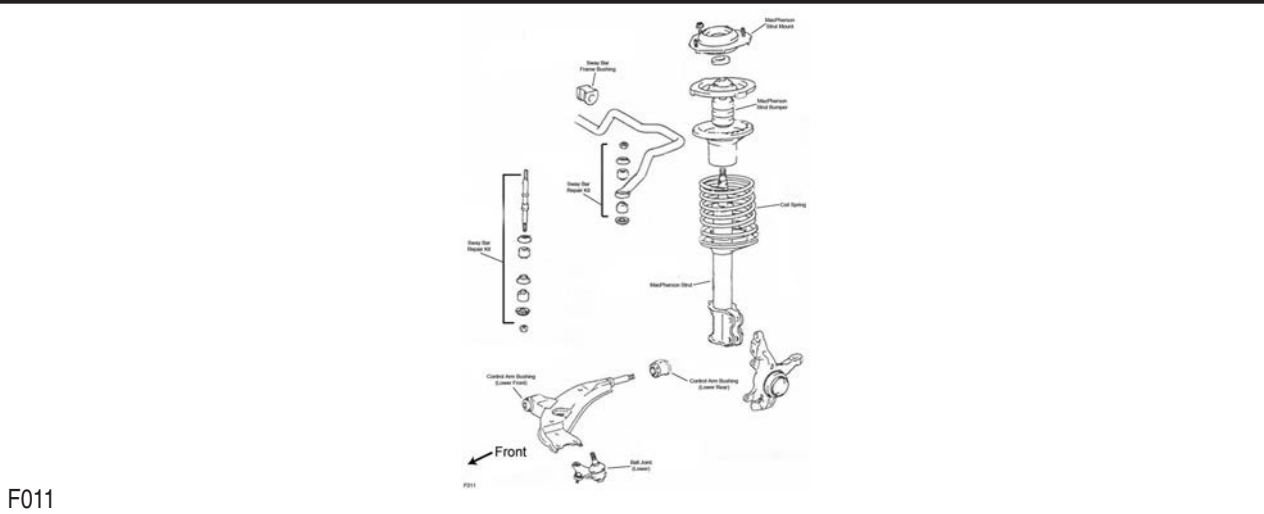
STEERING



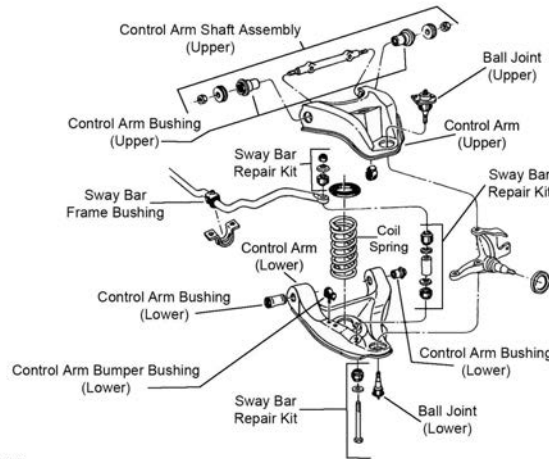
| Year | Model/Application | Part | P/C Qty | Figure |
|---------------------------------|---|-------|-----------|--------|
| Tie Rod Adjusting Sleeve | | | | |
| 1980-1975 | | | ES2032S | 2 S204 |
| Tie Rod End | | | | |
| 1980-1975 | (Powdered Metal Gusher Brg. For Better Lubrication) | Outer | ES425RL ‡ | 2 S204 |
| | (Powdered Metal Gusher Brg. For Better Lubrication) | Inner | ES681N ‡ | 2 S204 |

CHEVROLET-Nova

FRONT SUSPENSION



FRONT SUSPENSION (Cont.)



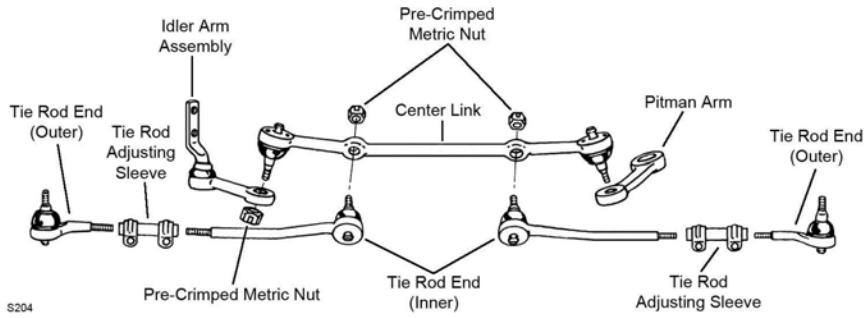
F188

F188

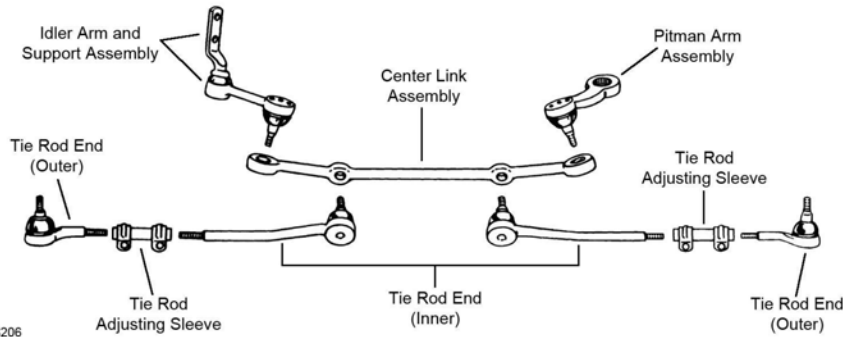
| Year | Model/Application | Part | P/C Qty | Figure |
|-----------------------------------|---|-------------|-----------|--------|
| Ball Joint | | | | |
| 1988-1985 | (Powdered Metal Gusher Brg. For Better Lubrication) | Lower | K9342 ‡ | 2 F011 |
| 1979-1975 | (Powdered Metal Gusher Brg. For Better Lubrication) | Upper | K5208 ‡ | 2 F188 |
| | (Powdered Metal Gusher Brg. For Better Lubrication) | Lower | K6145T ‡ | 2 F188 |
| 1974-1969 | (Powdered Metal Gusher Brg. For Better Lubrication) | Upper | K5108 ‡ | 2 F188 |
| | (Powdered Metal Gusher Brg. For Better Lubrication) | Lower | K5103 ‡ | 2 F188 |
| Control Arm Bumper Bushing | | | | |
| 1979-1973 | | Lower | K6606 | 2 F188 |
| Control Arm Bushing | | | | |
| 1988-1985 | | Lower Rear | K9426 | 2 F011 |
| 1979-1975 | | Lower Rear | K5262 | 2 F188 |
| | | Lower Front | K3113 | 2 F188 |
| Control Arm Bushing Set | | | | |
| 1979-1975 | | Upper | K6144 | 2 F188 |
| | (Contains Front And Rear Bushings) | Lower | K6109 | 2 F188 |
| 1974-1970 | (Contains Front And Rear Bushings) | Lower | K6076 | 2 F188 |
| 1974-1969 | (Contains Front And Rear Bushings) | Upper | K5196 | 2 F188 |
| Control Arm Shaft Assembly | | | | |
| 1979-1975 | (Provides Additional Positive(+) Camber Adjustment, Offset Shaft Kit, Design Allows Ease Of Installation) | Upper | K6146 ‡ | 2 F188 |
| 1974-1969 | (Provides Additional Positive(+) Camber Adjustment, Offset Shaft Kit, Design Allows Ease Of Installation) | Upper | K5250 ‡ | 2 F188 |
| Strut Bumper Bellows | | | | |
| 1988 | Base Model, CL, (Replacement Type, Contains Bumper) | | K90460 | 2 F011 |
| 1987-1985 | (Replacement Type, Contains Bumper) | | K90460 | 2 F011 |
| Strut Mount | | | | |
| 1988-1985 | (Contains Bearing) | | K9488 | 2 F011 |
| Strut Spring Seat | | | | |
| 1988 | LW0 DOHC, (Reduces Noise) | Lower | K160076 ‡ | 2 F011 |
| Sway Bar Bushing | | | | |
| 1988-1985 | | To Frame | K90531 | 1 F011 |
| 1979-1976 | 1" Sway Bar Diameter | To Frame | K6161 | 1 F188 |
| 1979-1970 | 15/16" Sway Bar Diameter | To Frame | K5241 | 1 F188 |
| 1975-1970 | 1" Sway Bar Diameter | To Frame | K5253 | 1 F188 |
| 1969 | (Standard Design) | To Frame | K5227 | 1 F188 |
| Sway Bar Repair Kit | | | | |
| 1988-1985 | (Heavy Duty Design) | | K90308 | 2 F011 |
| | 5" Length, (Includes Polyurethane Bushings And Solid Metal Sleeve For Enhanced Performance. Barrel Nut Allows For Easier Installation.) | | K700530 ‡ | 2 F011 |
| 1979-1970 | (Heavy Duty Design) | | K6630 ‡ | 2 F188 |
| | (Includes Polyurethane Bushings And Solid Metal Sleeve For Enhanced Performance. Barrel Nut Allows For Easier Installation.) | | K700532 ‡ | 2 F188 |
| | (Standard Design) | | K5252 | 2 F188 |

CHEVROLET-Nova (Cont.)

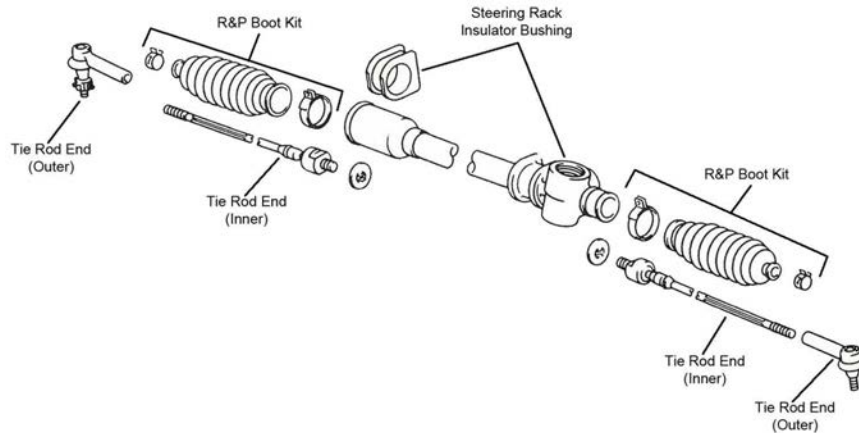
STEERING



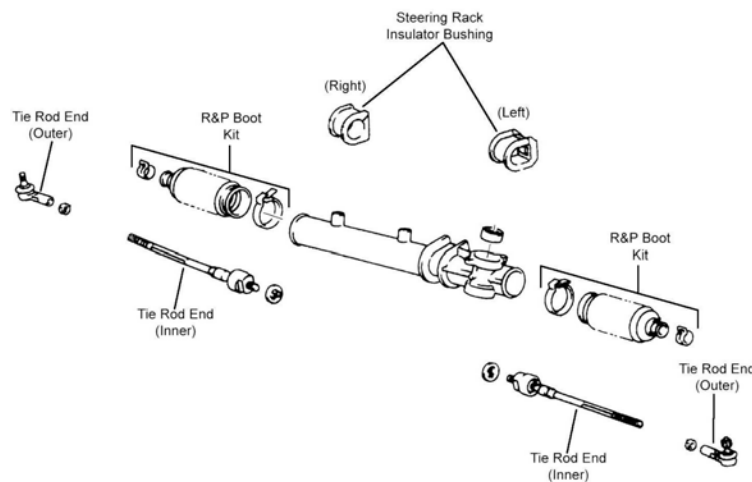
S204



S206



S371



S372

| Year | Model/Application | Part | P/C Qty | Figure |
|--------------------|---|---------|---------|--------|
| Center Link | | | | |
| 1979-1975 | (Powdered Metal Gusher Brg. For Better Lubrication) | DS829 ‡ | 1 | S204 |

| STEERING (Cont.) | | | | | |
|--|---|-----------------|-----------|--------|------------|
| Year | Model/Application | Part | P/C Qty | Figure | |
| Idler Arm | | | | | |
| 1979-1975 | (Powdered Metal Gusher Brg. For Better Lubrication) | K6186 ‡ | 1 | S204 | |
| 1974-1969 | (Powdered Metal Gusher Brg. For Better Lubrication) | K6099 ‡ | 1 | S206 | |
| Pitman Arm | | | | | |
| 1974-1973 | Power Steering, (Greaseable Socket Reduces Corrosion/Wear) | K6151 ‡ | 1 | S206 | |
| 1974-1970 | Manual Steering, (Greaseable Socket Reduces Corrosion/Wear) | K6150 ‡ | 1 | S206 | |
| 1972-1971 | Except High Performance, Power Steering, (Greaseable Socket Reduces Corrosion/Wear) | K6151 ‡ | 1 | S206 | |
| 1972-1970 | 350(5.7L), High Performance Engine, Power Steering, (Greaseable Socket Reduces Corrosion/Wear) | K6582 ‡ | 1 | S206 | |
| 1970 | 153(2.5L), Except High Performance, Power Steering, (Greaseable Socket Reduces Corrosion/Wear) | K6151 ‡ | 1 | S206 | |
| | 230(3.8L), Except High Performance, Power Steering, (Greaseable Socket Reduces Corrosion/Wear) | K6151 ‡ | 1 | S206 | |
| | 250(4.1L), Except High Performance, Power Steering, (Greaseable Socket Reduces Corrosion/Wear) | K6151 ‡ | 1 | S206 | |
| | 307(5.0L), Except High Performance, Power Steering, (Greaseable Socket Reduces Corrosion/Wear) | K6151 ‡ | 1 | S206 | |
| | 350(5.7L), Except High Performance, Power Steering, (Greaseable Socket Reduces Corrosion/Wear) | K6151 ‡ | 1 | S206 | |
| 1969 | 396(6.6L), Except High Performance, Power Steering, (Greaseable Socket Reduces Corrosion/Wear) | K6151 ‡ | 1 | S206 | |
| | 153(2.5L), Manual Steering, (Greaseable Socket Reduces Corrosion/Wear) | K6150 ‡ | 1 | S206 | |
| | 230(3.8L), Manual Steering, (Greaseable Socket Reduces Corrosion/Wear) | K6150 ‡ | 1 | S206 | |
| | 250(4.1L), Manual Steering, (Greaseable Socket Reduces Corrosion/Wear) | K6150 ‡ | 1 | S206 | |
| | 350(5.7L), Manual Steering, (Greaseable Socket Reduces Corrosion/Wear) | K6150 ‡ | 1 | S206 | |
| 396(6.6L), Manual Steering, (Greaseable Socket Reduces Corrosion/Wear) | K6150 ‡ | 1 | S206 | | |
| Rack & Pinion Boot Kit | | | | | |
| 1988-1985 | Manual Steering | Left K9315 | 1 | S371 | |
| | Manual Steering | Right K9319 | 1 | S371 | |
| | Power Steering | K9320 | 2 | S372 | |
| Tie Rod Adjusting Sleeve | | | | | |
| 1979-1975 | | ES2004S | 2 | S204 | |
| 1974-1970 | | ES350S | 2 | S206 | |
| Tie Rod End | | | | | |
| 1988-1985 | Rack & Pinion Manual, (Full Ball Stud Provides 360 Degrees Of Smooth Rotation) Rack & Pinion Power, (Full Ball Stud Provides 360 Degrees Of Smooth Rotation) | Outer | ES2382 | 2 | S371, S372 |
| | | Inner | EV190 ‡ | 2 | S371 |
| | | Inner | EV189 ‡ | 2 | S372 |
| 1979-1975 | (Powdered Metal Gusher Brg. For Better Lubrication) (Powdered Metal Gusher Brg. For Better Lubrication) (Powdered Metal Gusher Brg. For Better Lubrication) | Outer | ES441RL ‡ | 2 | S204 |
| | | Left Inner | ES442L ‡ | 1 | S204 |
| | | Right Inner | ES443L ‡ | 1 | S204 |
| 1974-1970 | (Powdered Metal Gusher Brg. For Better Lubrication) | Inner | ES681N ‡ | 2 | S206 |
| 1974-1969 | (Powdered Metal Gusher Brg. For Better Lubrication) | Outer | ES381RL ‡ | 2 | S206 |
| REAR SUSPENSION | | | | | |
| | | | | | |
| R313 | | | | | |
| Year | Model/Application | Part | P/C Qty | Figure | |
| Leaf Spring Bushing | | | | | |
| 1979-1973 | 2.019" Outside Diameter | Fixed End SB298 | 2 | R313 | |
| 1969 | 1.970" Outside Diameter | Front K200920 | 4 | R313 | |
| Leaf Spring Shackle Bushing | | | | | |
| 1979-1969 | 1.580" Outside Diameter | K6560 | 4 | R313 | |
| Strut Bumper Bellows | | | | | |
| 1988-1985 | (Contains Bumper) | K90461 | 2 | | |

CHEVROLET–Nova (Cont.)

REAR SUSPENSION (Cont.)

| Year | Model/Application | Part | P/C Qty | Figure |
|--------------------|-------------------|-------|---------|--------|
| Strut Mount | | | | |
| 1988-1985 | | K9478 | 2 | |

CHEVROLET–Special

FRONT SUSPENSION

| Year | Model/Application | Part | P/C Qty | Figure |
|----------------------------|---|--------------------|---------|--------|
| King Bolt Set | | | | |
| 1952-1949 | .8660" X 5.312", (Contains Metal Bushing) | 8282B | 1 | |
| Sway Bar Repair Kit | | | | |
| 1952-1949 | (Standard Design) 6-1/2" Length, (Includes Polyurethane Bushings And Solid Metal Sleeve For Enhanced Performance. Barrel Nut Allows For Easier Installation.) | K6217 K700534 ‡ | 2 2 | |

REAR SUSPENSION

| R310 | | | | |
|----------------------------|-------------------|---------|---------|--------|
| Year | Model/Application | Part | P/C Qty | Figure |
| Leaf Spring Shackle | | | | |
| 1952-1949 | | K150312 | 2 | R310 |

CHEVROLET–Special 150

FRONT SUSPENSION

| Year | Model/Application | Part | P/C Qty | Figure |
|--------------------------------|---|----------------|--------------------|--------|
| Ball Joint | | | | |
| 1957-1955 | (Powdered Metal Gusher Brg. For Better Lubrication) (Powdered Metal Gusher Brg. For Better Lubrication) | Upper Lower | K6034 ‡ K670 ‡ | 2 2 |
| Control Arm Bushing | | | | |
| 1957-1955 | (Contains Front And Rear Bushings) | Lower | K304 | 1 |
| Control Arm Bushing Set | | | | |
| 1957-1955 | (Contains Front And Rear Bushings) | Upper | K5196 | 2 |
| King Bolt Set | | | | |
| 1954-1953 | .8660" X 5.312", (Contains Metal Bushing) | | 8282B | 1 |
| Sway Bar Repair Kit | | | | |
| 1957-1953 | (Standard Design) 6-1/2" Length, (Includes Polyurethane Bushings And Solid Metal Sleeve For Enhanced Performance. Barrel Nut Allows For Easier Installation.) | | K6217 K700534 ‡ | 2 2 |

STEERING

| Year | Model/Application | Part | P/C Qty | Figure |
|------------------------------|--|-------------------------------|---------------------------------|-------------|
| Idler Arm Bushing Kit | | | | |
| 1957-1955 | | Center Link End | K377 | 1 |
| Tie Rod End | | | | |
| 1957-1955 | (Powdered Metal Gusher Brg. For Better Lubrication) Conventional Manual Steering, (Powdered Metal Gusher Brg. For Better Lubrication) Conventional Power Steering, (Powdered Metal Gusher Brg. For Better Lubrication) | Outer Inner Right Inner | ES234RL ‡ ES577 ‡ ES577 ‡ | 2 2 1 |