

PLYMOUTH-Duster (Cont.)

REAR SUSPENSION (Cont.)

Year	Model/Application	Part	P/C Qty	Figure
Leaf Spring Bushing				
1976-1975	Fixed End	K200998	2	R309
Leaf Spring Shackle				
1976-1970		K150239	2	R309
Leaf Spring Shackle Bushing				
1976-1970		K7309	4	R309

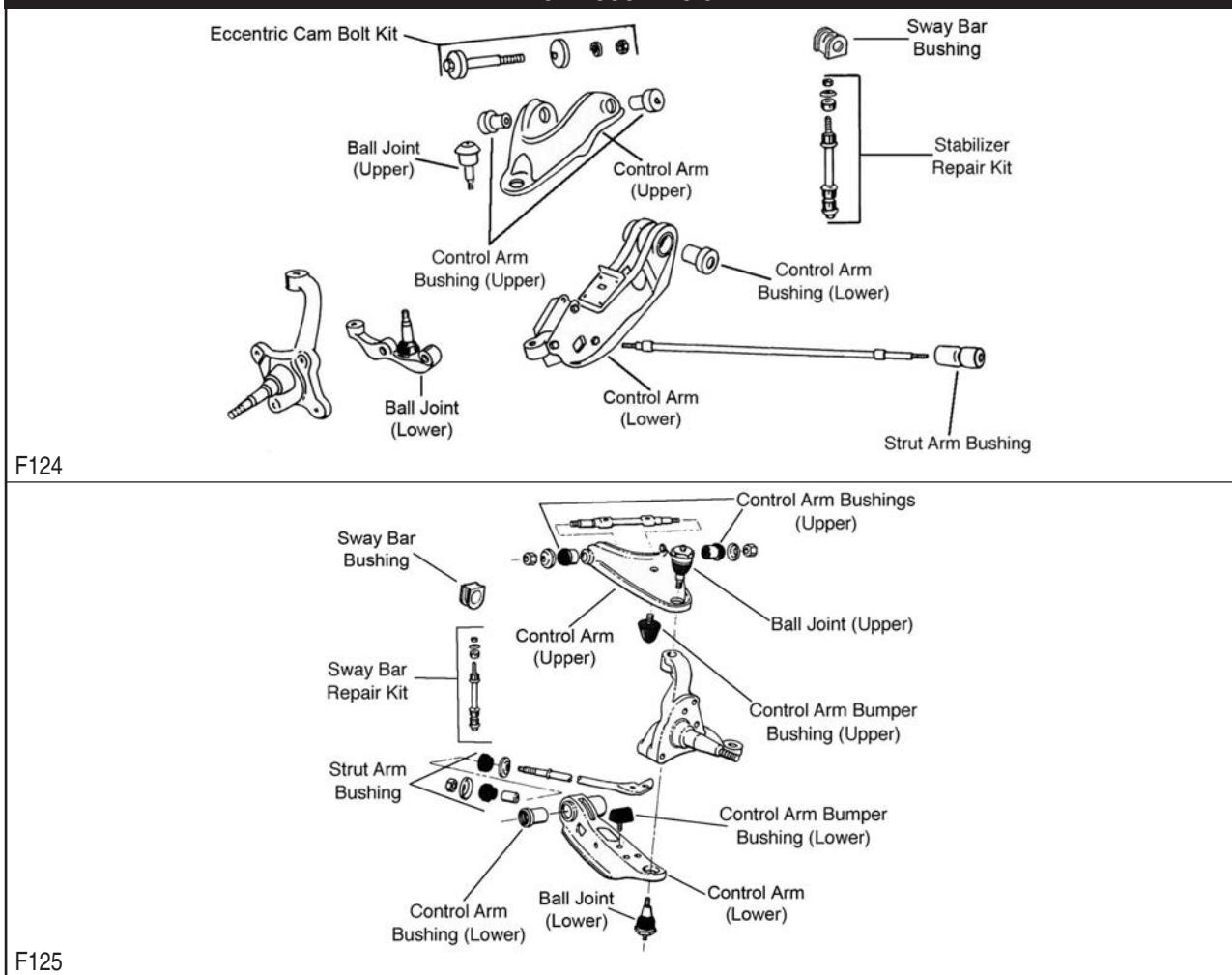
PLYMOUTH-Expo

FRONT SUSPENSION

Year	Model/Application	Part	P/C Qty	Figure
Strut Bumper Bellows				
1989-1987	(Replacement Type, Contains Bumper)	K90460	2	
Strut Mount				
1989-1987	Vehicles Built For Canadian Market, (Contains Bearing, Contains Spacer)	K7179	2	
Wheel Hub Repair Kit				
1989-1987	(4 Stud Hub) (5 Stud Hub)	518501 518502	2 2	

PLYMOUTH-Fury

FRONT SUSPENSION



FRONT SUSPENSION (Cont.)				
Year	Model/Application	Part	P/C Qty	Figure
Fury				
Ball Joint				
1978-1975	(Powdered Metal Gusher Brg. For Better Lubrication) (Press In Type, Powdered Metal Gusher Brg. For Better Lubrication)	Upper Lower	K772 ‡ K7069 ‡	2 2 F125
1964-1962	(Powdered Metal Gusher Brg. For Better Lubrication) (Powdered Metal Gusher Brg. For Better Lubrication)	Left Lower Right Lower	K783 ‡ K781 ‡	1 1 F124 F124
1964-1959	(Powdered Metal Gusher Brg. For Better Lubrication)	Upper	K772 ‡	2 F124, F125
1961-1959	(Threaded Type, Powdered Metal Gusher Brg. For Better Lubrication)	Lower	K719 ‡	2 F125
Control Arm Bumper Bushing				
1978-1975		Upper	K7293	2 F125
Control Arm Bushing				
1978-1975	(Contains Front And Rear Bushings)	Upper Lower	K7058 K7059	2 2 F125 F125
1964-1962	(Contains Front And Rear Bushings) (Optional, Eccentric Bushing, Provides Additional Positive(+) Camber Adjustment)	Upper Upper Lower	K408 K7103 K791	1 2 2 F124 F124 F124
1961-1959	(Contains Front And Rear Bushings)	Upper	K325	1 F125
Strut Rod Bushing				
1964-1959			K7039	1 F124, F125
Sway Bar Bushing				
1978-1975		To Frame To Strut Rod	K7062 K7064	1 1 F125 F125
Fury Custom				
Ball Joint				
1971	(Powdered Metal Gusher Brg. For Better Lubrication)	Upper	K772 ‡	2 F124
Control Arm Bumper Bushing				
1971		Upper	K7293	2 F124
Control Arm Bushing				
1971	(Optional, Eccentric Bushing, Provides Additional Positive(+) Camber Adjustment, High Quality Elastomer For Durability And Performance)	Upper Lower	K7104 ‡ K7007	2 2 F124 F124
Control Arm Bushing Set				
1971	(Contains Front And Rear Bushings, Standard Design)	Upper	K7006	2 F124, F125
Strut Rod Bushing Kit				
1971	(Standard Design)		K7019A	1
Sway Bar Bushing				
1971		To Frame	K7061	1 F124
Fury Grand Coupe				
Ball Joint				
1972	(Powdered Metal Gusher Brg. For Better Lubrication)	Upper	K772 ‡	2 F124
1970	(Powdered Metal Gusher Brg. For Better Lubrication)	Upper	K772 ‡	2 F124
Control Arm Bumper Bushing				
1972		Upper	K7293	2 F124
Control Arm Bushing				
1972	(Optional, Eccentric Bushing, Provides Additional Positive(+) Camber Adjustment, High Quality Elastomer For Durability And Performance)	Upper Lower	K7104 ‡ K7007	2 2 F124 F124
1970	(Optional, Eccentric Bushing, Provides Additional Positive(+) Camber Adjustment, High Quality Elastomer For Durability And Performance)	Upper Lower	K7104 ‡ K7007	2 2 F124 F124
Control Arm Bushing Set				
1972	(Contains Front And Rear Bushings, Standard Design)	Upper	K7006	2 F124, F125
1970	(Contains Front And Rear Bushings, Standard Design)	Upper	K7006	2 F124, F125
Strut Rod Bushing Kit				
1972	(Standard Design)		K7019A	1
1970	(Standard Design)		K7019A	1
Sway Bar Bushing				
1972		To Frame	K7061	1 F124
1970		To Frame	K7061	1 F124

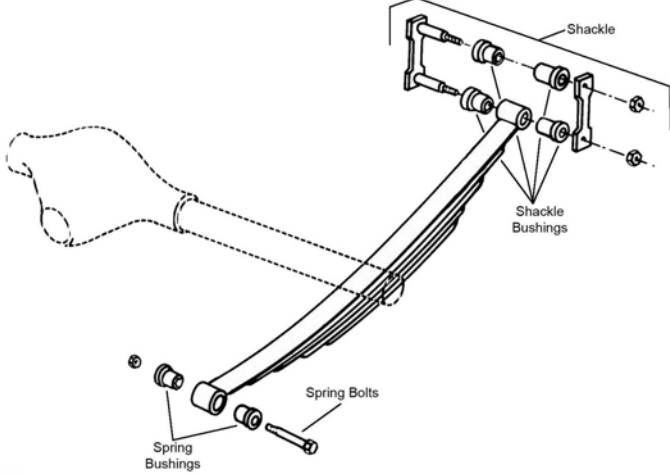
PLYMOUTH-Fury (Cont.)

FRONT SUSPENSION (Cont.)					
Year	Model/Application	Part	P/C Qty	Figure	
Fury Grand Sedan					
Ball Joint					
1972	(Powdered Metal Gusher Brg. For Better Lubrication)	Upper	K772 ‡	2	F124
Control Arm Bumper Bushing					
1972		Upper	K7293	2	F124
Control Arm Bushing					
1972	(Optional, Eccentric Bushing, Provides Additional Positive(+) Camber Adjustment, High Quality Elastomer For Durability And Performance)	Upper Lower	K7104 ‡ K7007	2 2	F124 F124
Control Arm Bushing Set					
1972	(Contains Front And Rear Bushings, Standard Design)	Upper	K7006	2	F124, F125
Strut Rod Bushing Kit					
1972	(Standard Design)		K7019A	1	
Sway Bar Bushing					
1972		To Frame	K7061	1	F124
Fury I					
Ball Joint					
1974	(Powdered Metal Gusher Brg. For Better Lubrication)	Upper	K778 ‡	2	F125
	(Powdered Metal Gusher Brg. For Better Lubrication)	Lower	K7025 ‡	2	F125
1973-1965	(Powdered Metal Gusher Brg. For Better Lubrication)	Upper	K772 ‡	2	F124
Control Arm Bumper Bushing					
1974		Upper	K7293	2	F125
1973-1971		Upper	K7293	2	F124
Control Arm Bushing					
1974-1965	(Optional, Eccentric Bushing, Provides Additional Positive(+) Camber Adjustment, High Quality Elastomer For Durability And Performance)	Upper Lower	K7104 ‡ K7007	2 2	F124, F125 F124, F125
Control Arm Bushing Set					
1971	(Contains Front And Rear Bushings, Standard Design)	Upper	K7006	2	F124, F125
1967	(Contains Front And Rear Bushings, Standard Design)	Upper	K7006	2	F124, F125
Strut Rod Bushing Kit					
1973-1967	(Standard Design)		K7019A	1	
Sway Bar Bushing					
1972-1965		To Strut Rod	K7064	1	F124
1971		To Frame	K7061	1	F124
1967		To Frame	K7061	1	F124
Fury II					
Ball Joint					
1974	(Powdered Metal Gusher Brg. For Better Lubrication)	Upper	K778 ‡	2	F125
	(Powdered Metal Gusher Brg. For Better Lubrication)	Lower	K7025 ‡	2	F125
1973-1965	(Powdered Metal Gusher Brg. For Better Lubrication)	Upper	K772 ‡	2	F124
Control Arm Bumper Bushing					
1974		Upper	K7293	2	F125
1973-1971		Upper	K7293	2	F124
Control Arm Bushing					
1974-1965	(Optional, Eccentric Bushing, Provides Additional Positive(+) Camber Adjustment, High Quality Elastomer For Durability And Performance)	Upper Lower	K7104 ‡ K7007	2 2	F124, F125 F124, F125
Control Arm Bushing Set					
1970-1969	(Contains Front And Rear Bushings, Standard Design)	Upper	K7006	2	F124, F125
1967-1965	(Contains Front And Rear Bushings, Standard Design)	Upper	K7006	2	F124, F125
Strut Rod Bushing Kit					
1973-1965	(Standard Design)		K7019A	1	
Sway Bar Bushing					
1972-1965		To Strut Rod	K7064	1	F124
1970-1969		To Frame	K7061	1	F124
1967-1965		To Frame	K7061	1	F124

FRONT SUSPENSION (Cont.)				
Year	Model/Application	Part	P/C Qty	Figure
Fury III				
Ball Joint				
1974	(Powdered Metal Gusher Brg. For Better Lubrication)	Upper	K778 ‡	2 F125
1973-1965	(Powdered Metal Gusher Brg. For Better Lubrication)	Upper	K772 ‡	2 F124
Control Arm Bumper Bushing				
1974		Upper	K7293	2 F125
1973-1971		Upper	K7293	2 F124
Control Arm Bushing				
1974-1965	(Optional, Eccentric Bushing, Provides Additional Positive(+) Camber Adjustment, High Quality Elastomer For Durability And Performance)	Upper Lower	K7104 ‡ K7007	2 2 F124, F125 F124, F125
Control Arm Bushing Set				
1967-1965	(Contains Front And Rear Bushings, Standard Design)	Upper	K7006	2 F124, F125
Strut Rod Bushing Kit				
1973-1965	(Standard Design)		K7019A	1
Sway Bar Bushing				
1972-1965		To Strut Rod	K7064	1 F124
1967-1965		To Frame	K7061	1 F124
STEERING				
<p>S221</p>				
Year	Model/Application	Part	P/C Qty	Figure
Fury				
Idler Arm				
1978-1975	(Powdered Metal Gusher Brg. For Better Lubrication)		K7066 ‡	1 S221
1964-1962	(Powdered Metal Gusher Brg. For Better Lubrication)		K779 ‡	1 S221
Pitman Arm				
1978-1975	Power Steering, (Greaseable Socket Reduces Corrosion/Wear)		K7076 ‡	1 S221
Tie Rod Adjusting Sleeve				
1978-1975			ES430S	2 S221
1964-1962			ES319S	2 S221
1961-1959			ES2004S	2 S221
Tie Rod End				
1978-1975	(Right Hand Threads, Powdered Metal Gusher Brg. For Better Lubrication) (Left Hand Threads, Powdered Metal Gusher Brg. For Better Lubrication)	Outer Inner	ES401R ‡ ES401L ‡	2 2 S221 S221
1964-1962	(Powdered Metal Gusher Brg. For Better Lubrication) (Powdered Metal Gusher Brg. For Better Lubrication)	Outer Inner	ES319R ‡ ES319L ‡	2 2 S221 S221
Fury Custom				
Idler Arm				
1971	(Powdered Metal Gusher Brg. For Better Lubrication)		K7014 ‡	1 S221
Idler Arm Bushing Kit				
1971	(For OE Design Idler Arm Only)	Support End	K7046	1 S221
Tie Rod End				
1971	(Powdered Metal Gusher Brg. For Better Lubrication) (Powdered Metal Gusher Brg. For Better Lubrication)	Outer Inner	ES352R ‡ ES355RL ‡	2 2 S221 S221

PLYMOUTH-Fury (Cont.)

STEERING (Cont.)					
Year	Model/Application	Part	P/C Qty	Figure	
Fury Grand Coupe					
Idler Arm					
1972	(Powdered Metal Gusher Brg. For Better Lubrication)	K7014 ‡	1	S221	
1970	(Powdered Metal Gusher Brg. For Better Lubrication)	K7014 ‡	1	S221	
Idler Arm Bushing Kit					
1972	(For OE Design Idler Arm Only)	Support End	K7046	1	S221
1970	(For OE Design Idler Arm Only)	Support End	K7046	1	S221
Tie Rod End					
1972	(Powdered Metal Gusher Brg. For Better Lubrication)	Outer	ES352R ‡	2	S221
	(Powdered Metal Gusher Brg. For Better Lubrication)	Inner	ES355RL ‡	2	S221
1970	(Powdered Metal Gusher Brg. For Better Lubrication)	Outer	ES352R ‡	2	S221
	(Powdered Metal Gusher Brg. For Better Lubrication)	Inner	ES355RL ‡	2	S221
Fury Grand Sedan					
Idler Arm					
1972	(Powdered Metal Gusher Brg. For Better Lubrication)	K7014 ‡	1	S221	
Idler Arm Bushing Kit					
1972	(For OE Design Idler Arm Only)	Support End	K7046	1	S221
Tie Rod End					
1972	(Powdered Metal Gusher Brg. For Better Lubrication)	Outer	ES352R ‡	2	S221
	(Powdered Metal Gusher Brg. For Better Lubrication)	Inner	ES355RL ‡	2	S221
Fury I					
Idler Arm					
1974	(Powdered Metal Gusher Brg. For Better Lubrication)	K7073 ‡	1	S221	
1973-1965	(Powdered Metal Gusher Brg. For Better Lubrication)	K7014 ‡	1	S221	
Idler Arm Bushing Kit					
1974-1969	(For OE Design Idler Arm Only)	Support End	K7046	1	S221
1968	From 4/1/68, (For OE Design Idler Arm Only)	Support End	K7046	1	S221
Tie Rod Adjusting Sleeve					
1974		ES440S	2	S221	
1965	4.72" Length	ES2004S	2	S221	
Tie Rod End					
1974-1966	(Powdered Metal Gusher Brg. For Better Lubrication)	Outer	ES352R ‡	2	S221
	(Powdered Metal Gusher Brg. For Better Lubrication)	Inner	ES355RL ‡	2	S221
1965	5.00" Length, (Powdered Metal Gusher Brg. For Better Lubrication)	Outer	ES352R ‡	2	S221
	5.00" Length, (Powdered Metal Gusher Brg. For Better Lubrication)	Inner	ES355RL ‡	2	S221
Fury II					
Idler Arm					
1974	(Powdered Metal Gusher Brg. For Better Lubrication)	K7073 ‡	1	S221	
1973-1965	(Powdered Metal Gusher Brg. For Better Lubrication)	K7014 ‡	1	S221	
Idler Arm Bushing Kit					
1974-1969	(For OE Design Idler Arm Only)	Support End	K7046	1	S221
1968	From 4/1/68, (For OE Design Idler Arm Only)	Support End	K7046	1	S221
Tie Rod Adjusting Sleeve					
1974		ES440S	2	S221	
1965	4.72" Length	ES2004S	2	S221	
Tie Rod End					
1974-1966	(Powdered Metal Gusher Brg. For Better Lubrication)	Outer	ES352R ‡	2	S221
	(Powdered Metal Gusher Brg. For Better Lubrication)	Inner	ES355RL ‡	2	S221
1965	5.00" Length, (Powdered Metal Gusher Brg. For Better Lubrication)	Outer	ES352R ‡	2	S221
	5.00" Length, (Powdered Metal Gusher Brg. For Better Lubrication)	Inner	ES355RL ‡	2	S221
Fury III					
Idler Arm					
1974	(Powdered Metal Gusher Brg. For Better Lubrication)	K7073 ‡	1	S221	
1973-1965	(Powdered Metal Gusher Brg. For Better Lubrication)	K7014 ‡	1	S221	
Idler Arm Bushing Kit					
1974-1969	(For OE Design Idler Arm Only)	Support End	K7046	1	S221
1968	From 4/1/68, (For OE Design Idler Arm Only)	Support End	K7046	1	S221

STEERING (Cont.)					
Year	Model/Application	Part	P/C Qty	Figure	
Fury III					
Tie Rod Adjusting Sleeve					
1974		ES440S	2	S221	
1965	4.72" Length	ES2004S	2	S221	
Tie Rod End					
1974-1966	(Powdered Metal Gusher Brg. For Better Lubrication) (Powdered Metal Gusher Brg. For Better Lubrication)	Outer Inner	ES352R ‡ ES355RL ‡	2 2	S221 S221
1965	5.00" Length, (Powdered Metal Gusher Brg. For Better Lubrication) 5.00" Length, (Powdered Metal Gusher Brg. For Better Lubrication)	Outer Inner	ES352R ‡ ES355RL ‡	2 2	S221 S221
REAR SUSPENSION					
					
R309					
Year	Model/Application	Part	P/C Qty	Figure	
Fury					
Leaf Spring Bolt					
1959		K150193	2	R309	
Leaf Spring Bolt Kit					
1964-1960		K150236	2	R309	
Leaf Spring Bushing					
1978-1975	2 Dr. Hardtop, 4 Dr. Sedan 4 Dr. Station Wagon, 6 Passenger 4 Dr. Station Wagon, 9 Passenger	Fixed End Fixed End Fixed End	SB364 SB364 K200998	2 2 2	R309 R309 R309
Leaf Spring Shackle Bushing					
1978-1975	(Split Type Bushing)		K7308	4	R309
1964-1959	(Split Type Bushing)		K7308	4	R309
Fury Custom					
Leaf Spring Bolt Kit					
1971		K150236	2	R309	
Leaf Spring Shackle Bushing					
1971	(Split Type Bushing)		K7308	4	R309
Fury Grand Coupe					
Leaf Spring Bolt Kit					
1972		K150236	2	R309	
1970		K150236	2	R309	
Leaf Spring Shackle Bushing					
1972	(Split Type Bushing)		K7308	4	R309
1970	(Split Type Bushing)		K7308	4	R309
Fury Grand Sedan					
Leaf Spring Bolt Kit					
1972		K150236	2	R309	
Leaf Spring Shackle Bushing					
1972	(Split Type Bushing)		K7308	4	R309

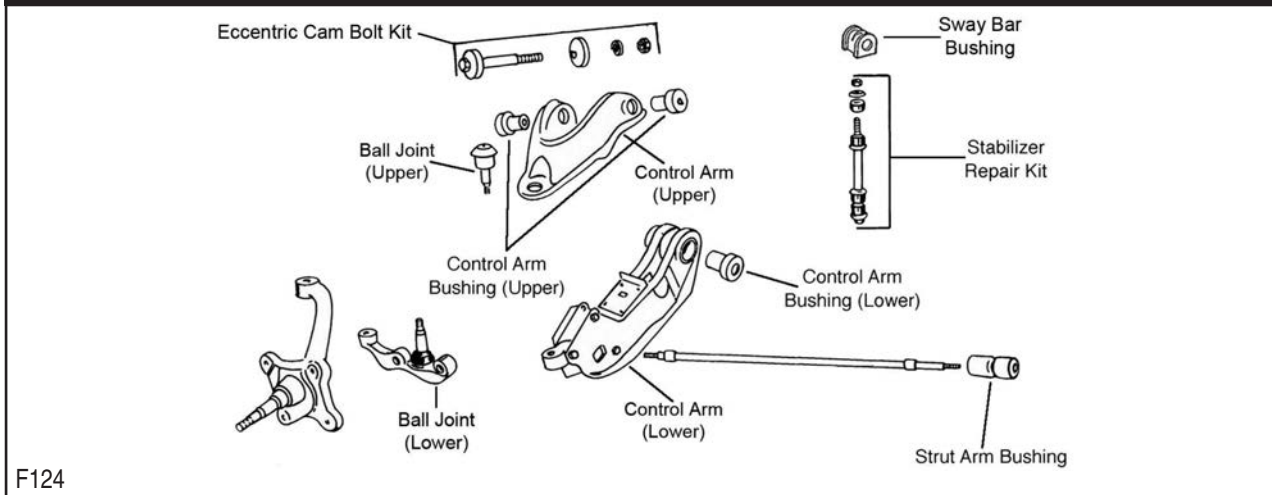
PLYMOUTH-Fury (Cont.)

REAR SUSPENSION (Cont.)

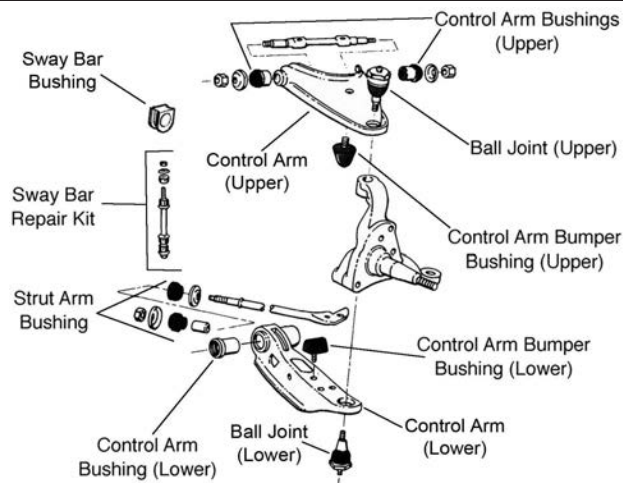
Year	Model/Application	Part	P/C Qty	Figure	
Fury I					
Leaf Spring Bolt Kit					
1973-1965		K150236	2	R309	
Leaf Spring Bushing					
1974	Fixed End	SB364	2	R309	
Leaf Spring Shackle Bushing					
1974-1965	(Split Type Bushing)	K7308	4	R309	
Fury II					
Leaf Spring Bolt Kit					
1973-1965		K150236	2	R309	
Leaf Spring Bushing					
1974	2 Dr. Hardtop, 2 Dr. Sedan, 4 Dr. Hardtop, 4 Dr. Sedan 4 Dr. Station Wagon, 9 Passenger	Fixed End Fixed End	SB364 K200998	2 2	R309 R309
Leaf Spring Shackle Bushing					
1974-1965	(Split Type Bushing)	K7308	4	R309	
Fury III					
Leaf Spring Bolt Kit					
1973-1965		K150236	2	R309	
Leaf Spring Bushing					
1974	2 Dr. Hardtop, 2 Dr. Sedan, 4 Dr. Hardtop, 4 Dr. Sedan 4 Dr. Station Wagon, 9 Passenger	Fixed End Fixed End	SB364 K200998	2 2	R309 R309
Leaf Spring Shackle Bushing					
1974-1965	(Split Type Bushing)	K7308	4	R309	

PLYMOUTH-Gran Fury

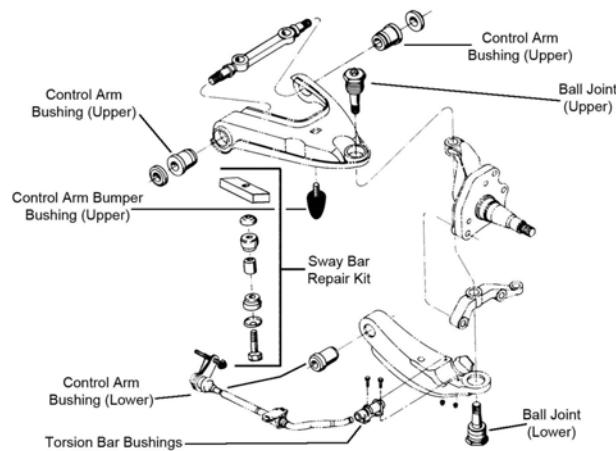
FRONT SUSPENSION



FRONT SUSPENSION (Cont.)



F125



F126

F126

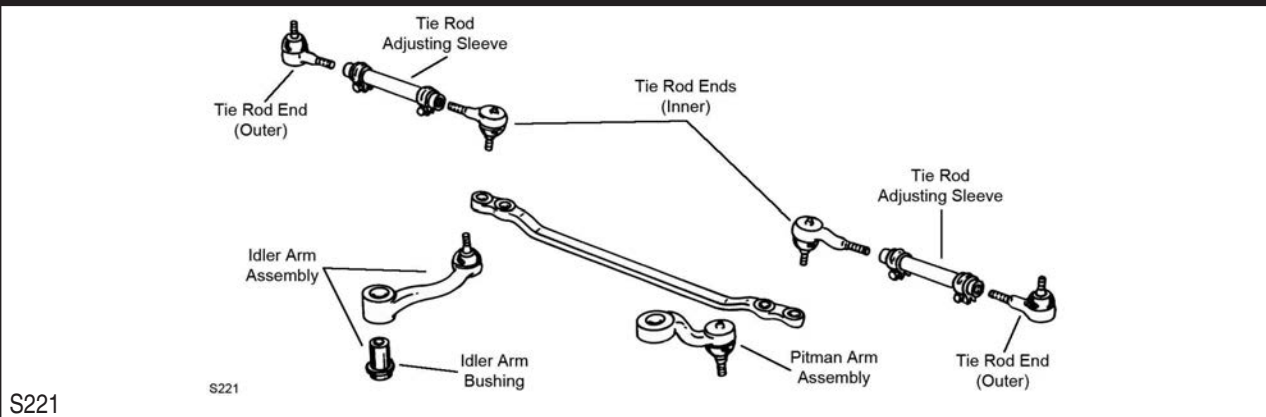
Year	Model/Application	Part	P/C Qty	Figure	
Ball Joint					
1989-1983	(Powdered Metal Gusher Brg. For Better Lubrication) (Press In Type, Powdered Metal Gusher Brg. For Better Lubrication)	Upper Lower	K772 ‡ K7069 ‡	2 2	F126 F126
1982-1981	(Powdered Metal Gusher Brg. For Better Lubrication) (Press In Type, Powdered Metal Gusher Brg. For Better Lubrication)	Upper Lower	K772 ‡ K7069 ‡	2 2	F125, F126 F125, F126
1980	(Powdered Metal Gusher Brg. For Better Lubrication) (Press In Type, Powdered Metal Gusher Brg. For Better Lubrication)	Upper Lower	K772 ‡ K7069 ‡	2 2	F125 F125
1977-1975	(Powdered Metal Gusher Brg. For Better Lubrication)	Lower	K7025 ‡	2	F125
1977-1974	(Powdered Metal Gusher Brg. For Better Lubrication)	Upper	K778 ‡	2	F125
1973	(Powdered Metal Gusher Brg. For Better Lubrication)	Upper	K772 ‡	2	F124, F125
1972	(Powdered Metal Gusher Brg. For Better Lubrication)	Upper	K772 ‡	2	F124
Control Arm Bumper Bushing					
1989-1983		Upper	K7293	2	F126
1982-1981		Upper	K7293	2	F125, F126
1980		Upper	K7293	2	F125
1977-1975		Upper	K7293	2	F125
1972		Upper	K7293	2	F124
Control Arm Bushing					
1989-1982		Lower	K7097	2	F126
1981-1980	(Contains Front And Rear Bushings)	Upper Lower	K7058 K7059	2 2	F125 F125
1977-1975	(Contains Front And Rear Bushings)	Upper	K7070	2	F125
1974-1973	(Optional, Eccentric Bushing, Provides Additional Positive(+) Camber Adjustment, High Quality Elastomer For Durability And Performance)	Upper	K7104 ‡	2	
1974-1972		Lower	K7007	2	F124, F125

PLYMOUTH-Gran Fury (Cont.)

FRONT SUSPENSION (Cont.)

Year	Model/Application	Part	P/C Qty	Figure
Control Arm Bushing Set				
1989-1982	(Contains Front And Rear Bushings) (Contains Front And Rear Bushings, Standard Design)	Upper Upper	K7190 ‡ K7084	1 2 F126
1972	(Contains Front And Rear Bushings, Standard Design)	Upper	K7006	2 F124, F125
Strut Rod Bushing Kit				
1973-1972	(Standard Design)		K7019A	1
Sway Bar Bushing				
1989-1982	Except 1-1/8" Sway Bar Diameter	To Frame	K7092	1 F126
1989-1980	1-1/8" Sway Bar Diameter	To Frame	K7108	1 F126
1981-1980	Except 1-1/8" Sway Bar Diameter Except 1-1/8" Sway Bar Diameter	To Frame To Strut Rod	K7062 K7064	1 1 F125 F125
1972		To Frame To Strut Rod	K7061 K7064	1 1 F124 F124
Sway Bar Repair Kit				
1989-1982	(Contains Sleeve) (Repair Sleeve Not Included)		K7087 K7304	2 2 F126 F126
1977-1975	(Heavy Duty Design) (Includes Polyurethane Bushings And Solid Metal Sleeve For Enhanced Performance. Barrel Nut Allows For Easier Installation.) (Standard Design)		K6629 ‡ K700535 ‡ K8266	2 2 2 F125 F125 F125

STEERING



Year	Model/Application	Part	P/C Qty	Figure
Idler Arm				
1989-1982	Except Police Or Taxi, (Powdered Metal Gusher Brg. For Better Lubrication)		K7086 ‡	1 S221
1981-1980	(Powdered Metal Gusher Brg. For Better Lubrication)		K7066 ‡	1 S221
1977	Brougham, Medium Line, Sport Suburban, (Powdered Metal Gusher Brg. For Better Lubrication)		K7073 ‡	1 S221
1976	Brougham, Custom, Custom Suburban, Sport Suburban, (Powdered Metal Gusher Brg. For Better Lubrication)		K7073 ‡	1 S221
1975	Brougham, Custom, Custom Suburban, Medium Line, Sport Suburban, (Powdered Metal Gusher Brg. For Better Lubrication)		K7073 ‡	1 S221
1974	(Powdered Metal Gusher Brg. For Better Lubrication)		K7073 ‡	1 S221
1973-1972	(Powdered Metal Gusher Brg. For Better Lubrication)		K7014 ‡	1 S221
Idler Arm Bushing Kit				
1974-1972	(For OE Design Idler Arm Only)	Support End	K7046	1 S221
Pitman Arm				
1989-1982	Power Steering, (Greaseable Socket Reduces Corrosion/Wear)		K7101 ‡	1 S221
1981-1980	(Greaseable Socket Reduces Corrosion/Wear)		K7076 ‡	1 S221
Tie Rod Adjusting Sleeve				
1989-1982	(Optional 11/16" Diameter Tie Rod Ends Must Be Used)		ES2016S ES440S	2 2 S221 S221
1981-1980			ES430S	2 S221
1977-1974			ES440S	2 S221
Tie Rod End				
1989-1982	(Optional 11/16" Diameter Tie Rod Ends Must Be Used, Powdered Metal Gusher Brg. For Better Lubrication) (Optional 11/16" Diameter Tie Rod Ends Must Be Used, Powdered Metal Gusher Brg. For Better Lubrication)	Outer Inner	ES352R ‡ ES355RL ‡	2 2 S221

STEERING (Cont.)				
Year	Model/Application	Part	P/C Qty	Figure
Tie Rod End				
1989-1980	(Right Hand Threads, Powdered Metal Gusher Brg. For Better Lubrication) (Left Hand Threads, Powdered Metal Gusher Brg. For Better Lubrication)	Outer Inner	ES401R ‡ ES401L ‡	2 2 S221
1977-1973	(Powdered Metal Gusher Brg. For Better Lubrication) (Powdered Metal Gusher Brg. For Better Lubrication)	Outer Inner	ES352R ‡ ES355RL ‡	2 2 S221
1972	(Powdered Metal Gusher Brg. For Better Lubrication) (Powdered Metal Gusher Brg. For Better Lubrication)	Outer Inner	ES352R ‡ ES355RL ‡	2 2
REAR SUSPENSION				
R309				
Year	Model/Application	Part	P/C Qty	Figure
Leaf Spring Bolt Kit				
1973		K150236	2	R309
Leaf Spring Bushing				
1989-1980	Standard Suspension	Front	SB364	2 R309
1977-1975	2 Dr. Hardtop, 4 Dr. Sedan 4 Dr. Station Wagon, 6 Passenger 4 Dr. Station Wagon, 9 Passenger	Fixed End	SB364	2 R309
		Fixed End	SB364	2 R309
		Fixed End	K200998	2 R309
1974		Fixed End	SB364	2 R309
Leaf Spring Shackle Bushing				
1989-1980	(Split Type Bushing)		K7308	4 R309
1977-1972	(Split Type Bushing)		K7308	4 R309
Sway Bar Repair Kit				
1989	(Bushing Only)		K7081	2

GTX-PLYMOUTH

FRONT SUSPENSION	
F124	