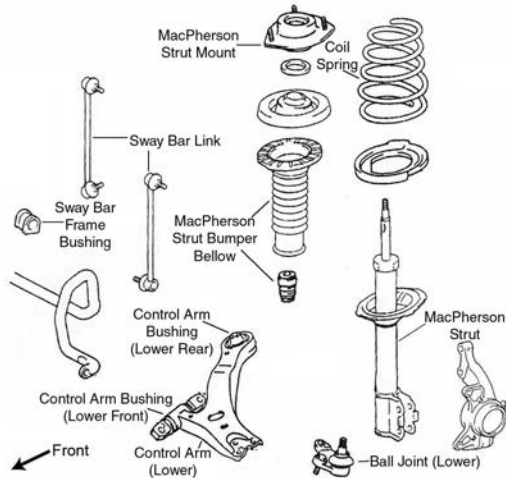


FRONT SUSPENSION



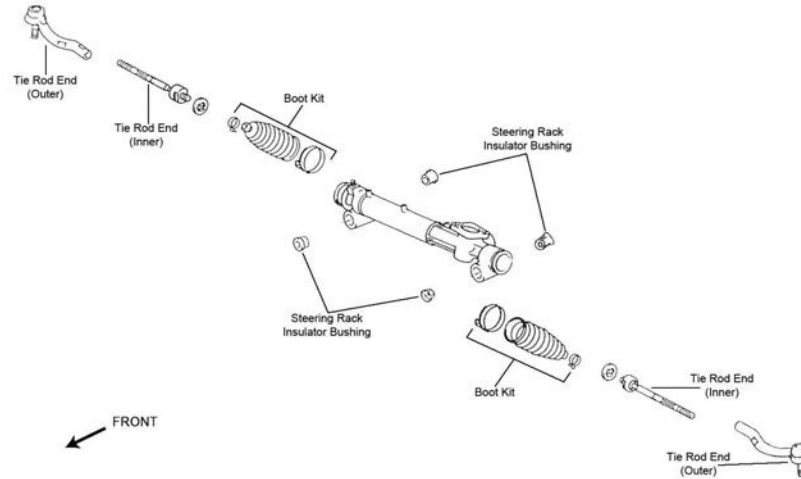
F034

Year	Model/Application	Part	P/C Qty	Figure
Ball Joint				
2017-2007	(Design Allows Ease Of Installation) (Design Allows Ease Of Installation)	Left Lower Right Lower	K500044 ‡ K500043 ‡	1 1 F034 F034
Control Arm				
2011-2007	Japan Built - 1st Digit Of VIN J, (R-Series) Japan Built - 1st Digit Of VIN J, (R-Series)	Left Lower Right Lower	RK642726 RK642725	1 1 F034 F034
Control Arm Bushing				
2017-2007		Lower Rear	K201640	2 F034
2017-2002	(Durable Socket Design Eases Installation, Vertical Mount)	Lower Rear	K200912 ‡	2 F034
2012-2007	(High Quality Elastomer For Durability And Performance) (High Quality Elastomer For Durability And Performance)	Lower Rear Lower Front	K200780 ‡ K200781 ‡	2 2 F034 F034
Control Arm with Ball Joint				
2017-2012	(R-Series) (R-Series)	Left Lower Right Lower	RK621477 RK621476	1 1 F034 F034
2011-2007	North American Built - 1st Digit Of VIN 1, 2 Or 4, (R-Series) North American Built - 1st Digit Of VIN 1, 2 Or 4, (R-Series)	Left Lower Right Lower	RK621477 RK621476	1 1 F034 F034
Strut and Spring Assembly				
2011-2010	2494cc(2.5L) 2494cc(2.5L)	Left Right	ST8634L ST8634R	1 1 F034 F034
2011-2007	2362cc(2.4L) 2362cc(2.4L) 3456cc(3.5L) 3456cc(3.5L)	Left Right Left Right	ST8634L ST8634R ST8624L ST8624R	1 1 1 1 F034 F034 F034 F034
Strut Bumper Bellows				
2017-2002	(Contains Bumper)		K90461	2 F034
Strut Mount				
2017-2012	(Contains Bearing)		K160434	2 F034
2011-2007	(Contains Bearing, Superior Rubber To Steel Bonding For Durability)		K160263 ‡	2 F034
Strut Spring Seat				
2015-2002	(Contains Insulator)	Upper	K160014	2 F034
2011-2004	(Reduces Noise)	Lower	K160251 ‡	2 F034
Sway Bar Bushing				
2017	Hybrid SE, SE, XLE, XSE, (Split Design For Easier Installation)	To Frame	K200617 ‡	1 F034
2017-2015	Hybrid LE, Hybrid XLE	To Frame	K90526	1 F034
2016	Hybrid SE, LE, SE, SE Special Edition, XLE, XSE, (Split Design For Easier Installation)	To Frame	K200617 ‡	1 F034
2015	Hybrid SE, L, LE, SE, XLE, XSE, (Split Design For Easier Installation)	To Frame	K200617 ‡	1 F034
2014	Hybrid LE, Hybrid SE, Hybrid XLE	To Frame	K90526	1 F034
2014-2012	L, LE, SE, XLE, (Split Design For Easier Installation)	To Frame	K200617 ‡	1 F034
2013-2012	Hybrid LE, Hybrid XLE	To Frame	K90526	1 F034
2011-2009	Base Model, Hybrid, LE, XLE, North American Built - 1st Digit Of VIN 1, 2 Or 4 SE, North American Built - 1st Digit Of VIN 1, 2 Or 4, (Split Design For Easier Installation)	To Frame To Frame	K90526 K200617 ‡	1 1 F034 F034
2011-2007	Japan Built - 1st Digit Of VIN J	To Frame	K90526	1 F034
2008	Base Model, SE, North American Built - 1st Digit Of VIN 1, 2 Or 4, (Split Design For Easier Installation)	To Frame	K200617 ‡	1 F034

FRONT SUSPENSION (Cont.)

Year	Model/Application	Part	P/C Qty	Figure
Sway Bar Bushing				
2008-2007	Hybrid, LE, XLE, North American Built - 1st Digit Of VIN 1, 2 Or 4	To Frame	K90526	1 F034
2007	CE, SE, North American Built - 1st Digit Of VIN 1, 2 Or 4, (Split Design For Easier Installation)	To Frame	K200617 ‡	1 F034
Sway Bar Link				
2016-2007	(Powdered Metal Gusher Brg. For Better Lubrication)		K750123 ‡	2 F034

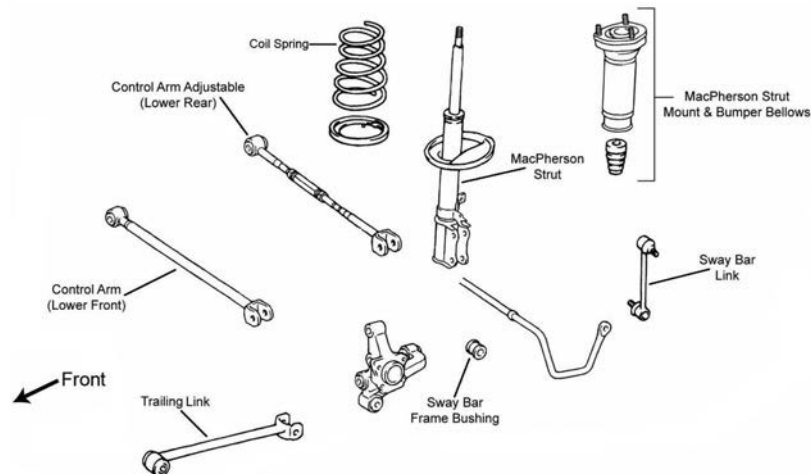
STEERING



S035

Year	Model/Application	Part	P/C Qty	Figure
Rack & Pinion Boot Kit				
2014-2007	(Design Allows Ease Of Installation)		K150272 ‡	2 S035
Tie Rod End				
2017-2012	(Design Allows Ease Of Installation)	Left Outer	ES800931 ‡	1 S035
	(Design Allows Ease Of Installation)	Right Outer	ES800930 ‡	1 S035
2011-2008	Base Model, LE, SE, XLE, (Full Ball Stud Provides 360 Degrees Of Smooth Rotation)	Inner	EV800085 ‡	2 S035
2011-2007	Hybrid, (Full Ball Stud Provides 360 Degrees Of Smooth Rotation)	Inner	EV800306 ‡	2 S035
2011-2004	(Design Allows Ease Of Installation)	Left Outer	ES80603 ‡	1 S035
	(Design Allows Ease Of Installation)	Right Outer	ES80602 ‡	1 S035
2007	CE, LE, SE, XLE, (Full Ball Stud Provides 360 Degrees Of Smooth Rotation)	Inner	EV800085 ‡	2 S035

REAR SUSPENSION



R024

Year	Model/Application	Part	P/C Qty	Figure
Control Arm				
2017	Hybrid LE, Hybrid XLE, XLE, (R-Series)	Lower Front	RK642986	2 R024
	Hybrid SE, SE, XSE, (R-Series)	Lower Front	RK642840	2 R024

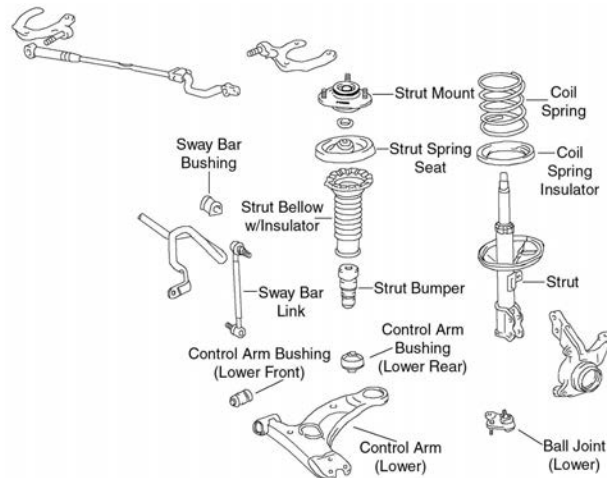
TOYOTA-Camry (Cont.)

REAR SUSPENSION (Cont.)

Year	Model/Application	Part	P/C Qty	Figure
Control Arm				
2017-2015	(Adjustable, R-Series) 2494cc(2.5L), (Adjustable, R-Series)	Left Rear Lower Right Rear Lower	RK643058 RK643058	1 1
2016	Hybrid LE, Hybrid XLE, LE, XLE, (R-Series) Hybrid SE, SE, SE Special Edition, XSE, (R-Series)	Lower Front Lower Front	RK642986 RK642840	2 2
2015	Hybrid SE, SE, XSE, (R-Series)	Lower Front	RK642840	2
2015-2012	Hybrid LE, Hybrid XLE, L, LE, XLE, (R-Series)	Lower Front	RK642986	2
2014	Hybrid SE, SE, (R-Series)	Lower Front	RK642840	2
2014-2012	(Adjustable, R-Series)	Lower Rear	RK643058	2
2013-2012	SE, (R-Series)	Lower Front	RK642840	2
2011-2007	(Non-Adjustable, R-Series) Japan Built, (Adjustable, R-Series) Japan Built, (R-Series) USA Built, (Adjustable, R-Series)	Lower Front Left Rear Lower Right Rear Lower Lower Rear	RK642027 RK642299 RK641864 RK641864	2 1 1 2
Strut and Spring Assembly				
2011-2007		Left Right	ST8625L ST8625R	1 1
Strut Bumper Bellows				
2011-2002	(Replacement Type, Contains Bumper)		K90460	2
Sway Bar Bushing				
2011-2010	Base Model, LE, SE, XLE, USA Built, (Reduces Noise)	To Frame	K200751 ‡	1
2009-2008	Base Model, LE, SE, XLE, (Reduces Noise)	To Frame	K200751 ‡	1
2007	CE, LE, SE, XLE, (Reduces Noise)	To Frame	K200751 ‡	1
Sway Bar Link				
2017-2012	(Powdered Metal Gusher Brg. For Better Lubrication)		K90345 ‡	2
2011-2007	(Powdered Metal Gusher Brg. For Better Lubrication)		K750011 ‡	2
Trailing Link				
2017-2012	(R-Series)		RK642958	2
2011-2007	Japan Built, (R-Series) USA Built, (R-Series)		RK641472 RK641934	2 2
Wheel Hub & Bearing Assembly				
2017-2012		Left Right	512454 512455	1 1
2011-2006		Left Right	512206 512207	1 1

TOYOTA-Corolla

FRONT SUSPENSION



F423

Year	Model/Application	Part	P/C Qty	Figure
Ball Joint				
2019	4 Dr. Sedan 5 Dr. Hatchback, (Full Ball Stud Provides 360 Degrees Of Smooth Rotation)	Lower Lower	K500040 K90309 ‡	2 2