

STEERING (Cont.)				
Year	Model/Application	Part	P/C Qty	Figure
<b>Rack &amp; Pinion Boot Kit</b>				
2019-2013		K150324	2	
2007-2005		K90316	2	S424
<b>Tie Rod End</b>				
2019-2008	(Design Allows Ease Of Installation) (Design Allows Ease Of Installation) (Design Allows Ease Of Installation)	Left Outer Right Outer Inner	ES800313 ‡ ES800314 ‡ EV800443 ‡	1 1 2
2007-2005	(Design Allows Ease Of Installation) (Design Allows Ease Of Installation) (Design Allows Ease Of Installation)	Left Outer Right Outer Inner	ES800452 ‡ ES800451 ‡ EV800320 ‡	1 1 2
<b>REAR SUSPENSION</b>				
Year	Model/Application	Part	P/C Qty	Figure
<b>Control Arm</b>				
2007-2005	(R-Series)	Lower	RK642454	2
<b>Sway Bar Bushing</b>				
2019-2008		To Frame	K201584	1
2007-2005		To Frame	K90526	1
<b>Sway Bar Link</b>				
2019-2008		Left	K750773	1
<b>Sway Bar Repair Kit</b>				
2007-2005			K700772	2
<b>Wheel Bearing Assembly</b>				
2019-2008		Left Right	512396 512397	1 1

## Rav 4-TOYOTA TRUCK

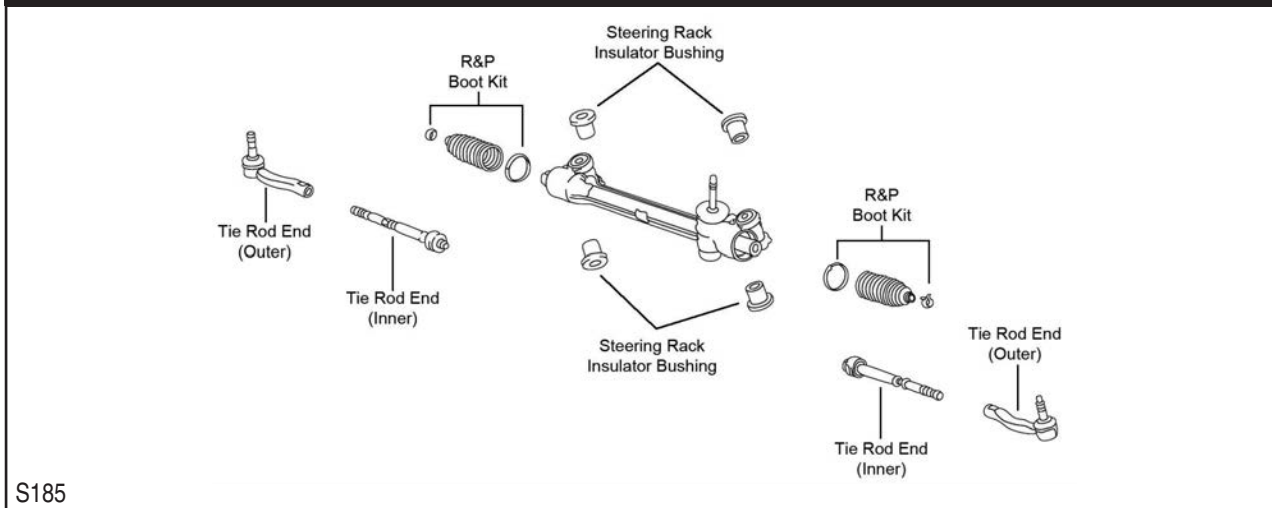
FRONT SUSPENSION				
F366				
Year	Model/Application	Part	P/C Qty	Figure
<b>Ball Joint</b>				
2018-2006	(Bolt On Type, Design Allows Ease Of Installation)	Lower	K500062 ‡	2
<b>Control Arm with Ball Joint</b>				
2018-2006	(R-Series) (R-Series)	Left Lower Right Lower	RK620586 RK620587	1 1
<b>Strut Bumper Bellows</b>				
2018-2013	(Original Equipment Type) (Replacement Type, Contains Bumper)		K201415 K90461	2 2
2012-2006	(Contains Bumper)		K90461	2
2010-2006	(Original Equipment Type)		K201415	2
<b>Strut Mount</b>				
2012-2009	(Contains Bearing, Superior Rubber To Steel Bonding For Durability)		K160314 ‡	2

# TOYOTA TRUCK-Rav 4 (Cont.)

## FRONT SUSPENSION (Cont.)

Year	Model/Application	Part	P/C Qty	Figure
<b>Strut Mount</b>				
2008-2006	Base Model, Limited, (Contains Bearing, Superior Rubber To Steel Bonding For Durability) Sport, (Contains Bearing, Superior Rubber To Steel Bonding For Durability)	K160265 ‡ K160314 ‡	2 2	F366 F366
<b>Sway Bar Bushing</b>				
2012-2009		To Frame K201279	1	F366
2008-2007	Except Third Row Seating	To Frame K201482	1	F366
2008-2006	Third Row Seating	To Frame K201279	1	F366
<b>Sway Bar Link</b>				
2018	2494cc(2.5L), (Full Ball Stud Provides 360 Degrees Of Smooth Rotation)	K750043 ‡	2	F366
2017-2006	(Full Ball Stud Provides 360 Degrees Of Smooth Rotation)	K750043 ‡	2	F366
<b>Wheel Hub &amp; Bearing Assembly</b>				
2018-2013		513258	2	
2012-2009	2494cc(2.5L)	513257	2	
2012-2006	3456cc(3.5L)	513258	2	
2008-2006	2362cc(2.4L)	513257	2	

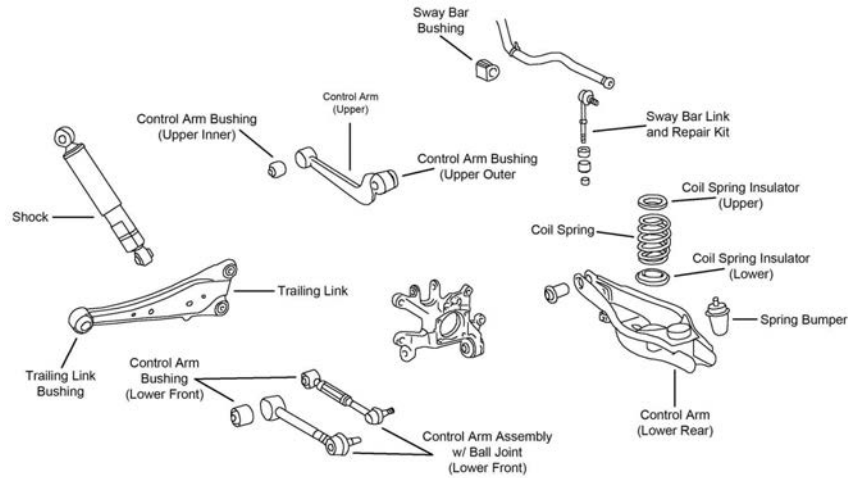
## STEERING



S185

Year	Model/Application	Part	P/C Qty	Figure
<b>Tie Rod End</b>				
2018	2494cc(2.5L), (Design Allows Ease Of Installation)	Left Outer ES800054 ‡	1	S185
	2494cc(2.5L), (Design Allows Ease Of Installation)	Right Outer ES800053 ‡	1	S185
2017-2006	(Design Allows Ease Of Installation)	Left Outer ES800054 ‡	1	S185
	(Design Allows Ease Of Installation)	Right Outer ES800053 ‡	1	S185
2012	Gasoline, (Design Allows Ease Of Installation)	Inner EV800328 ‡	2	S185
2011-2006	(Design Allows Ease Of Installation)	Inner EV800328 ‡	2	S185

## REAR SUSPENSION

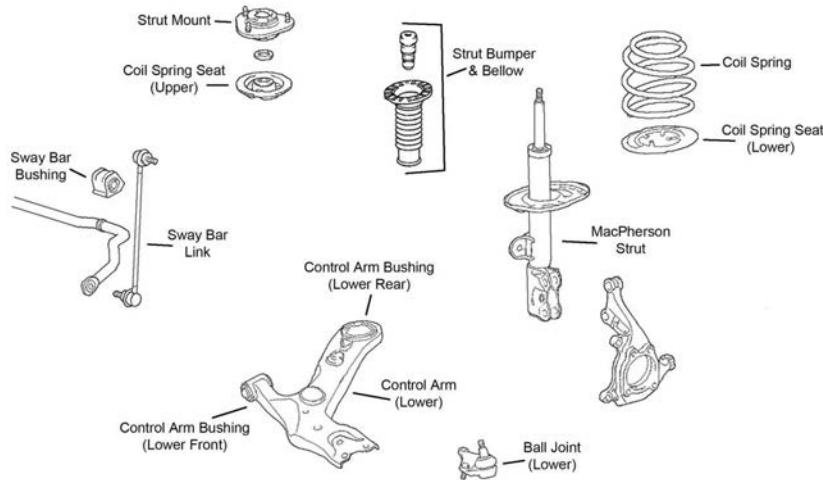


R192

Year	Model/Application	Part	P/C Qty	Figure	
<b>Control Arm</b>					
2018-2006	Plus Or Minus 3 Degrees Camber, (Greaseable, Turnbuckle Adjustment, R-Series) Plus Or Minus 3 Degrees Camber, (Non-Greasable, Eccentric Adjustment, R-Series) Plus Or Minus 3 Degrees Camber, (Greaseable, Turnbuckle Adjustment, R-Series) Plus Or Minus 3 Degrees Camber, (Non-Greasable, Eccentric Adjustment, R-Series)	Left Upper	RK100356	1	R192
		Left Upper	RK100354	1	R192
		Right Upper	RK100357	1	R192
		Right Upper	RK100355	1	R192
2017-2006	(R-Series) (R-Series)	Left Upper	RK641740	1	R192
		Right Upper	RK641739	1	R192
2014	Except Japan Built, Thru 6/14, (R-Series) Except Japan Built, Thru 6/14, (R-Series) Thru 9/14, Japan Built, (R-Series) Thru 9/14, Japan Built, (R-Series)	Left Rear Lower	RK641939	1	R192
		Right Rear Lower	RK641938	1	R192
		Left Rear Lower	RK641939	1	R192
		Right Rear Lower	RK641938	1	R192
2013-2006	(R-Series) (R-Series)	Left Rear Lower	RK641939	1	R192
		Right Rear Lower	RK641938	1	R192
<b>Control Arm with Ball Joint</b>					
2018-2011	North American Built - 1st Digit Of VIN 1, 2 Or 4, (R-Series)	Lower Front	RK621848	2	R192
2010-2006	Plus Or Minus 3 Degree Toe, (Adjustable, R-Series)	Lower Front	RK100170	2	R192
<b>Sway Bar Bushing</b>					
2012-2006	(Split Design For Easier Installation)	To Frame	K200829 ‡	1	R192
<b>Sway Bar Link</b>					
2018-2006	(Powdered Metal Gusher Brg. For Better Lubrication)		K750257 ‡	2	R192
<b>Wheel Hub &amp; Bearing Assembly</b>					
2018-2013	All Wheel Drive		512374	2	
2018-2006	Front Wheel Drive		512372	2	
2012-2006	Four Wheel Drive (4X4)		512374	2	

# TOYOTA TRUCK-Rav 4 - EV

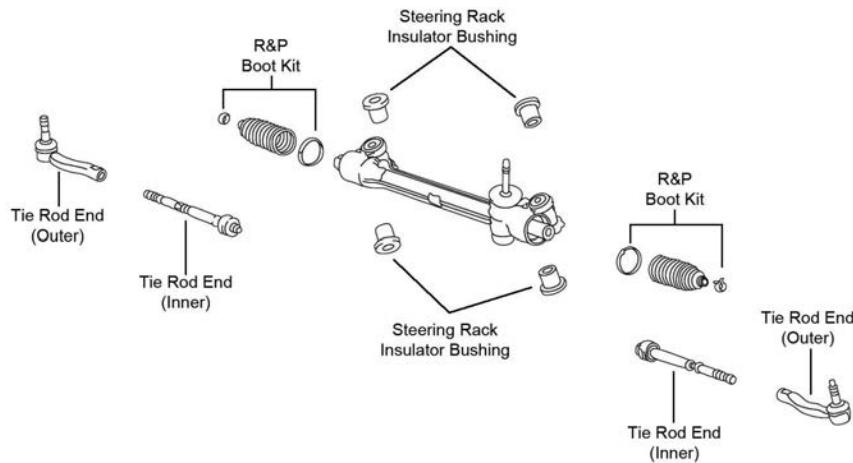
## FRONT SUSPENSION



F366

Year	Model/Application	Part	P/C Qty	Figure
<b>Ball Joint</b>				
2014-2012	(Bolt On Type, Design Allows Ease Of Installation)	Lower	K500062 ‡	2 F366
<b>Control Arm with Ball Joint</b>				
2014-2012	(R-Series)	Left Lower	RK620586	1 F366
	(R-Series)	Right Lower	RK620587	1 F366
<b>Strut Bumper Bellows</b>				
2014-2013	(Original Equipment Type)		K201415	2 F366
	(Replacement Type, Contains Bumper)		K90461	2 F366
<b>Strut Mount</b>				
2012	(Contains Bearing, Superior Rubber To Steel Bonding For Durability)		K160314 ‡	2 F366
<b>Sway Bar Bushing</b>				
2014-2012		To Frame	K201279	1 F366
<b>Sway Bar Link</b>				
2014-2012	(Full Ball Stud Provides 360 Degrees Of Smooth Rotation)		K750043 ‡	2 F366
<b>Wheel Hub &amp; Bearing Assembly</b>				
2014-2013			513258	2

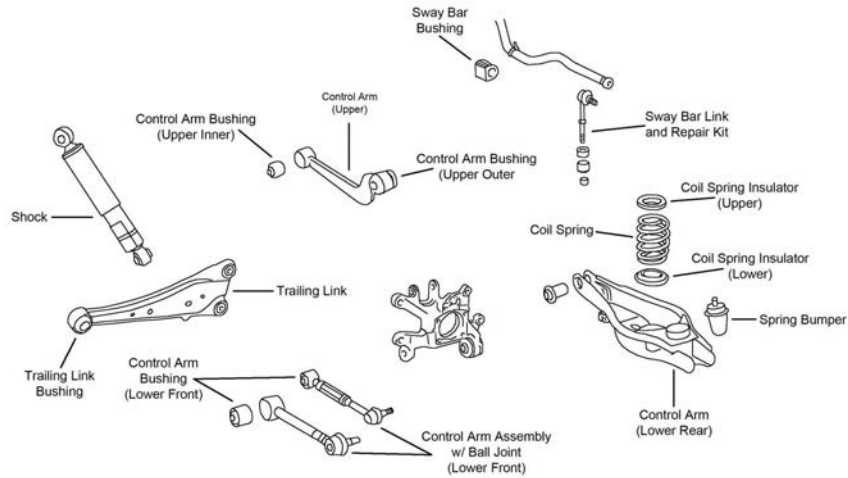
## STEERING



S185

Year	Model/Application	Part	P/C Qty	Figure
<b>Tie Rod End</b>				
2014-2012	(Design Allows Ease Of Installation)	Left Outer	ES800054 ‡	1 S185
	(Design Allows Ease Of Installation)	Right Outer	ES800053 ‡	1 S185

**REAR SUSPENSION**

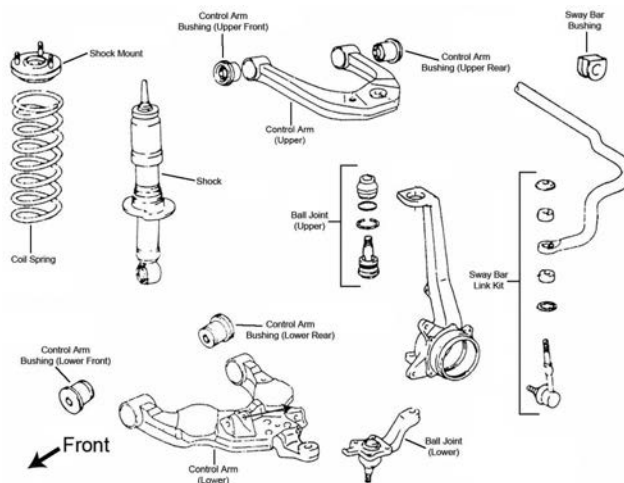


R192

Year	Model/Application	Part	P/C Qty	Figure
<b>Control Arm</b>				
2014-2012	(R-Series) Left Upper	RK641740	1	R192
	(R-Series) Right Upper	RK641739	1	R192
	(R-Series) Left Rear Lower	RK641939	1	R192
	(R-Series) Right Rear Lower	RK641938	1	R192
	Plus Or Minus 3 Degrees Camber, (Greaseable, Turnbuckle Adjustment, R-Series) Left Upper	RK100356	1	R192
	Plus Or Minus 3 Degrees Camber, (Non-Greasable, Eccentric Adjustment, R-Series) Left Upper	RK100354	1	R192
	Plus Or Minus 3 Degrees Camber, (Greaseable, Turnbuckle Adjustment, R-Series) Right Upper	RK100357	1	R192
	Plus Or Minus 3 Degrees Camber, (Non-Greasable, Eccentric Adjustment, R-Series) Right Upper	RK100355	1	R192
<b>Control Arm with Ball Joint</b>				
2014-2012	North American Built - 1st Digit Of VIN 1, 2 Or 4, (R-Series) Lower Front	RK621848	2	R192
<b>Sway Bar Bushing</b>				
2014-2012	(Split Design For Easier Installation) To Frame	K200829 ‡	1	R192
<b>Sway Bar Link</b>				
2014	Canada Built, (Powdered Metal Gusher Brg. For Better Lubrication)	K750257 ‡	2	R192
2013-2012	(Powdered Metal Gusher Brg. For Better Lubrication)	K750257 ‡	2	R192
<b>Wheel Hub &amp; Bearing Assembly</b>				
2014-2012	Front Wheel Drive	512372	2	

**Sequoia-TOYOTA TRUCK**

**FRONT SUSPENSION**



F039