

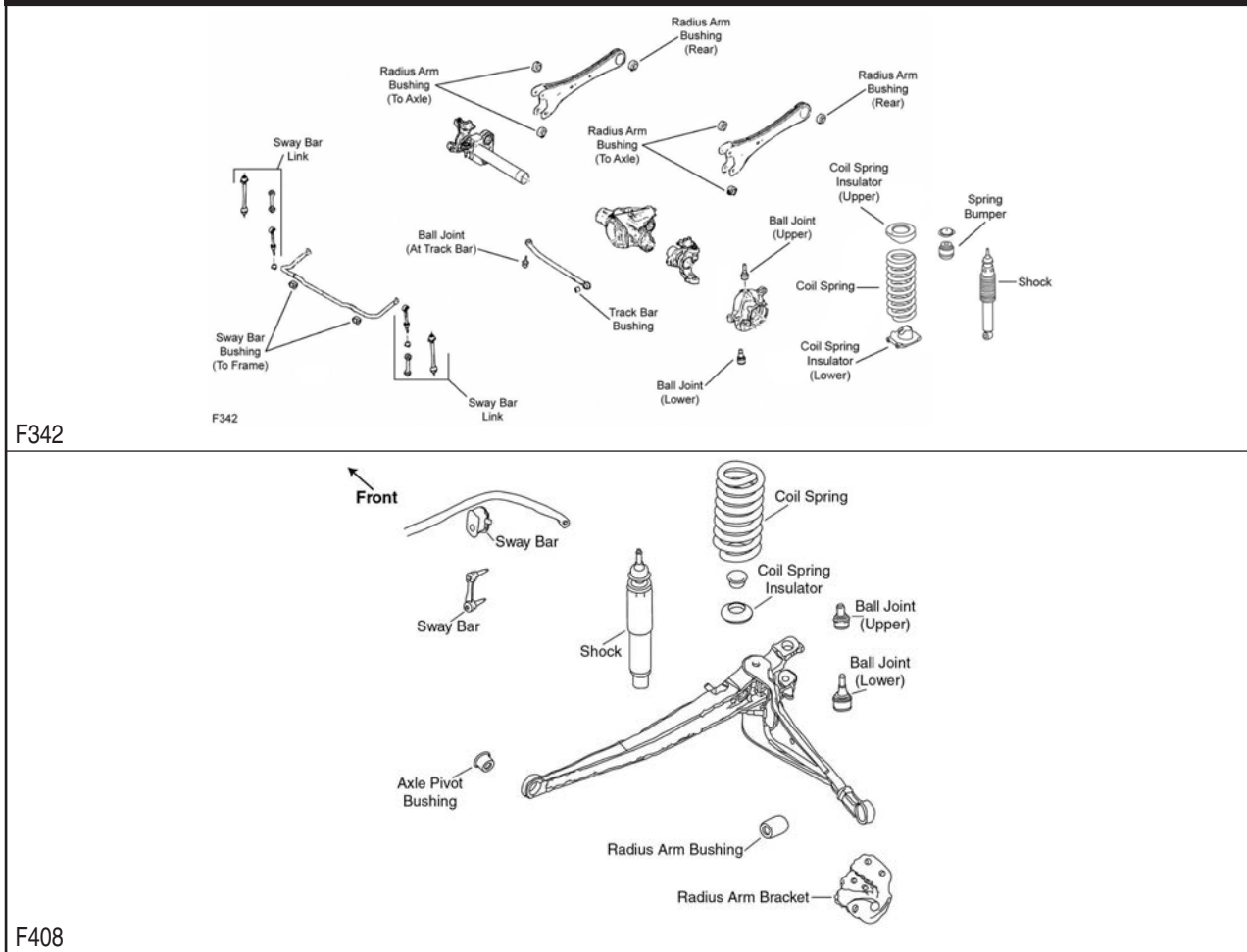
FORD TRUCK-100, 150 Series - 1/2 Ton (Cont.)

REAR SUSPENSION (Cont.)

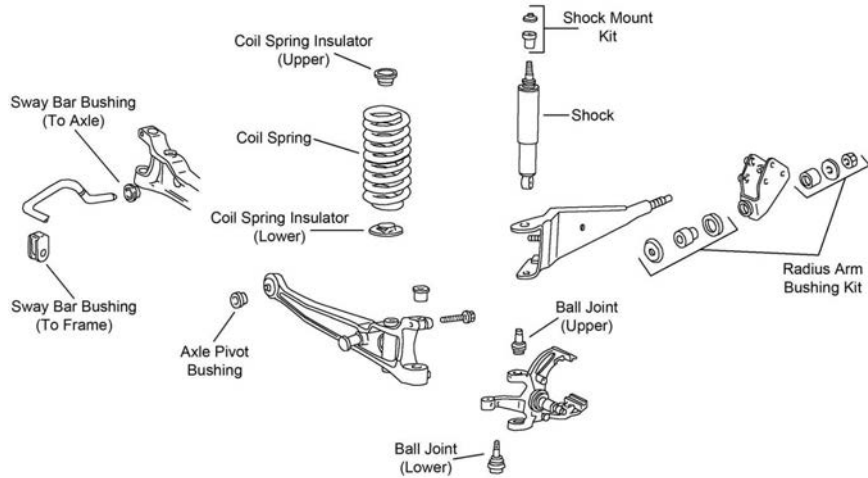
Year	Model/Application	Part	P/C Qty	Figure
Econoline E150				
Leaf Spring Shackle Bracket				
2007-1997		Rear K150414	2	R309
Sway Bar Bushing				
2014-2005	(Improved Design Bushing With Premium Rubber Material And Synthetic Fabric Lining Lasts Longer And Eliminates Noise) (Standard Design)	To Frame To Frame	1 1	
Sway Bar Link				
2014-2005	12.9" Length, (Link And Bushing Kit, Improves Upon OE Design)	K80015 ‡	2	
F150				
Leaf Spring Bushing				
2014-2005	(High Quality Elastomer For Durability And Performance)	Front K200107 ‡	2	R309
2014-2004		Front K201765	2	R309
Leaf Spring Shackle Bushing				
2015-2009		Lower K201182	2	R309
2014-2005	(High Quality Elastomer For Durability And Performance)	Rear K200108 ‡	4	R309

FORD TRUCK-200, 250 Series - 3/4 Ton

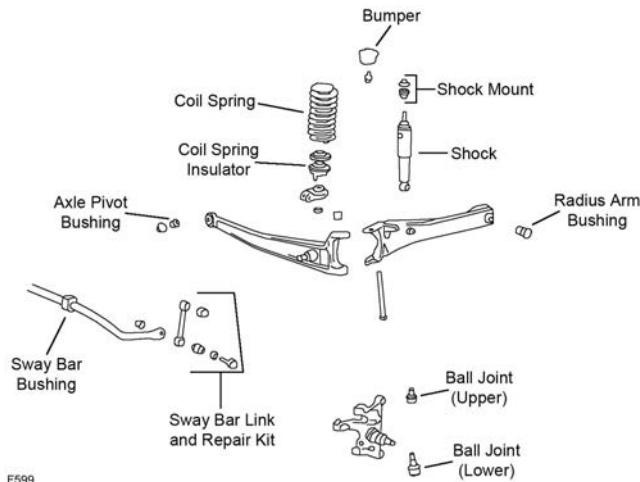
FRONT SUSPENSION



FRONT SUSPENSION (Cont.)



F457



F599

Year	Model/Application	Part	P/C Qty	Figure
Econoline E250				
Ball Joint				
2009-2008	(Powdered Metal Gusher Brg. For Better Lubrication)	Lower	K80197 ‡	2 F408
2008	(Powdered Metal Gusher Brg. For Better Lubrication, New Pre-Installed Integral Dust Boot Eases Installation, New And Original Designs Can Be Installed)	Upper	K80196 ‡	2 F408
2007-1997	(Powdered Metal Gusher Brg. For Better Lubrication, New Pre-Installed Integral Dust Boot Eases Installation, New And Original Designs Can Be Installed)	Upper	K80196 ‡	2 F457
		Lower	K80197 ‡	2 F457
Front Axle Pivot Bushing				
2009-2008			K8672	2 F408
2007	9/16" Bolts, 1.762" Outside Diameter		K8672	2 F408
2007-1997	5/8" Bolt, 1.702" Outside Diameter		K8312	2 F457
Radius Arm Bushing Kit				
2009-2008			K201344	2 F408
2007-1997	(Standard Design)		K8268	1 F457
Sway Bar Bushing				
2009-2008	1" Sway Bar Diameter, (Split Design For Easier Installation)	To Frame	K8690 ‡	1 F408
2008	(Standard Design) 7/8" Or 23mm Sway Bar Diameter	To Axle	K8645	2 F408
		To Frame	K8689	1 F408
2007-1997	(Contains Polyurethane Bushing) (Standard Design) 1" Sway Bar Diameter, (Split Design For Easier Installation) 7/8" Or 23mm Sway Bar Diameter	To Axle	K80222 ‡	1 F457
		To Axle	K8645	2 F457
		To Frame	K8690 ‡	1 F457
		To Frame	K8689	1 F457
Sway Bar Link				
2009-2008	(Powdered Metal Gusher Brg. For Better Lubrication)		K750322 ‡	2 F408

FORD TRUCK-200, 250 Series - 3/4 Ton (Cont.)

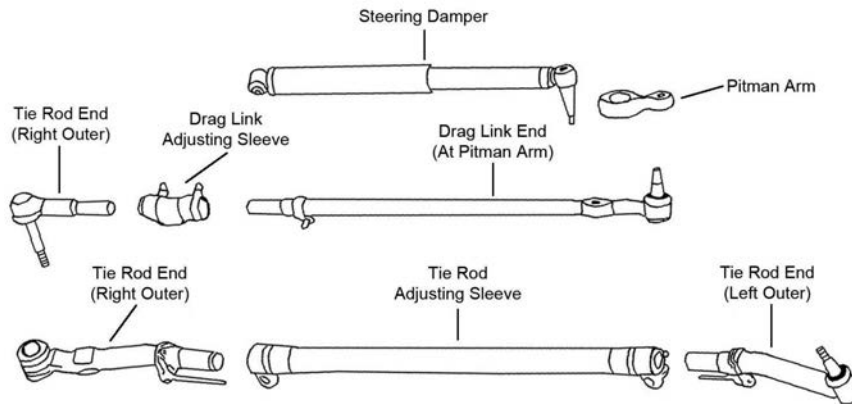
FRONT SUSPENSION (Cont.)

Year	Model/Application	Part	P/C Qty	Figure
Econoline E250 Super Duty				
Ball Joint				
2014-2009	(Powdered Metal Gusher Brg. For Better Lubrication, New Pre-Installed Integral Dust Boot Eases Installation, New And Original Designs Can Be Installed)	Upper	K80028 ‡	2 F408
2014-2008	(Powdered Metal Gusher Brg. For Better Lubrication)	Lower	K80197 ‡	2 F408
2008	(Powdered Metal Gusher Brg. For Better Lubrication, New Pre-Installed Integral Dust Boot Eases Installation, New And Original Designs Can Be Installed)	Upper	K80196 ‡	2 F408
2007-2000	(Powdered Metal Gusher Brg. For Better Lubrication)	Lower	K80197 ‡	2 F457
2007-1999	(Powdered Metal Gusher Brg. For Better Lubrication, New Pre-Installed Integral Dust Boot Eases Installation, New And Original Designs Can Be Installed)	Upper	K80196 ‡	2 F457
Front Axle Pivot Bushing				
2014-2008			K8672	2 F408
2007-1999	5/8" Bolt, 1.762" Outside Diameter, (Standard Design) 9/16" Bolts, 1.762" Outside Diameter		K8300 K8672	2 F457 2 F457
Radius Arm Bushing Kit				
2014-2008			K201344	2 F408
2007-1999	(Standard Design)		K8268	1 F457
Sway Bar Bushing				
2014-2008	1" Sway Bar Diameter, (Split Design For Easier Installation)	To Frame	K8690 ‡	1 F408
2008	(Standard Design) 7/8" Or 23mm Sway Bar Diameter	To Axle To Frame	K8645 K8689	2 F408 1 F408
2007-2000	(Contains Polyurethane Bushing) (Standard Design) 1" Sway Bar Diameter, (Split Design For Easier Installation)	To Axle To Axle To Frame	K80222 ‡ K8645 K8690 ‡	1 F457 2 F457 1 F457
2007-1999	7/8" Or 23mm Sway Bar Diameter	To Frame	K8689	1 F457
Sway Bar Link				
2014-2008	(Powdered Metal Gusher Brg. For Better Lubrication)		K750322 ‡	2 F408
Econoline E250 Super Duty Ext.				
Ball Joint				
2011-2009	(Powdered Metal Gusher Brg. For Better Lubrication, New Pre-Installed Integral Dust Boot Eases Installation, New And Original Designs Can Be Installed)	Upper	K80028 ‡	2 F408
2008	(Powdered Metal Gusher Brg. For Better Lubrication, New Pre-Installed Integral Dust Boot Eases Installation, New And Original Designs Can Be Installed)	Upper	K80196 ‡	2 F408
2007-2006	(Powdered Metal Gusher Brg. For Better Lubrication, New Pre-Installed Integral Dust Boot Eases Installation, New And Original Designs Can Be Installed)	Upper	K80196 ‡	2 F457
Front Axle Pivot Bushing				
2011-2008			K8672	2 F408
2007-2006	5/8" Bolt, 1.702" Outside Diameter 5/8" Bolt, 1.762" Outside Diameter, (Standard Design) 9/16" Bolts, 1.762" Outside Diameter		K8312 K8300 K8672	2 F457 2 F457 2 F457
Radius Arm Bushing Kit				
2007-2006	(Standard Design)		K8268	1 F457
Sway Bar Bushing				
2007-2006	7/8" Or 23mm Sway Bar Diameter	To Frame	K8689	1 F457
Sway Bar Link				
2011-2008	(Powdered Metal Gusher Brg. For Better Lubrication)		K750322 ‡	2 F408
F250 Super Duty				
Ball Joint				
2018-2005	Four Wheel Drive (4X4), (Powdered Metal Gusher Brg. For Better Lubrication) Four Wheel Drive (4X4), (Powdered Metal Gusher Brg. For Better Lubrication)	Upper Lower	K80026 ‡ K8607T ‡	2 F342 2 F342
2016-2005	Four Wheel Drive (4X4), (Design Allows Ease Of Installation)	At Track Bar	K500262 ‡	1 F342
2016-2003	Two Wheel Drive (4x2), (Powdered Metal Gusher Brg. For Better Lubrication, New Pre-Installed Integral Dust Boot Eases Installation, New And Original Designs Can Be Installed) Two Wheel Drive (4x2), (Powdered Metal Gusher Brg. For Better Lubrication)	Upper Lower	K80028 ‡ K80027 ‡	2 F599 2 F599
Radius Arm Bushing Kit				
2014-2005	Four Wheel Drive (4X4)	Rear	K201635	2 F342
Sway Bar Bushing				
2016-2011	Four Wheel Drive (4X4), Except Wide Track Axle, (Design Allows Ease Of Installation) Four Wheel Drive (4X4), Wide Track Axle, (Design Allows Ease Of Installation) Two Wheel Drive (4x2), (Design Allows Ease Of Installation)	To Frame To Frame To Frame	K200884 ‡ K200885 ‡ K200882 ‡	1 F342 1 F342 1 F599
2010-2008	Four Wheel Drive (4X4), (Design Allows Ease Of Installation) Two Wheel Drive (4x2), (Design Allows Ease Of Installation)	To Frame To Frame	K200884 ‡ K200881 ‡	1 F342 1 F599

FRONT SUSPENSION (Cont.)

Year	Model/Application	Part	P/C Qty	Figure
F250 Super Duty				
Sway Bar Bushing				
2007-2005	Four Wheel Drive (4X4), 21mm Sway Bar Diameter, (Design Allows Ease Of Installation) To Frame	K200880 ‡	1	F342
Sway Bar Link				
2017-2011	Four Wheel Drive (4X4), (Full Ball Stud Provides 360 Degrees Of Smooth Rotation)	K750362 ‡	2	F342
2017-2003	Two Wheel Drive (4x2), 6.85" Center To Center	K80043	2	F599
2010	Four Wheel Drive (4X4), From 2/12/10, (Full Ball Stud Provides 360 Degrees Of Smooth Rotation)	K750362 ‡	2	F342
	Four Wheel Drive (4X4), Thru 2/11/10, (Full Ball Stud Provides 360 Degrees Of Smooth Rotation)	K700452 ‡	2	F342
2009-2008	Four Wheel Drive (4X4), (Full Ball Stud Provides 360 Degrees Of Smooth Rotation)	K700452 ‡	2	F342
2008	Two Wheel Drive (4x2)	K80043	1	F599
2007	Four Wheel Drive (4X4), From 12/18/06, (Full Ball Stud Provides 360 Degrees Of Smooth Rotation)	K700452 ‡	2	F342
	Four Wheel Drive (4X4), Thru 12/17/06, (Full Ball Stud Provides 360 Degrees Of Smooth Rotation)	K750138 ‡	2	F342
Track Bar				
2015-2005	(Design Allows Ease Of Installation)	DS300045 ‡	1	F342
Track Bar Bushing				
2015-2005	(Design Allows Ease Of Installation)	K200640 ‡	1	F342
Wheel Hub & Bearing Assembly				
2016	Four Wheel Drive (4X4)	515130	2	
2015-2011	Four Wheel Drive (4X4), Single Rear Wheels	515130	2	
2010-2005	Four Wheel Drive (4X4), Single Rear Wheels	515081	2	
2009-2005	Four Wheel Drive (4X4), Dual Rear Wheels	515082	2	
Transit 250				
Ball Joint				
2017-2015	Lower	K500339	2	
Control Arm Bushing				
2017-2015	Lower Front Inner	K201761	2	
Sway Bar Link				
2016-2015		K750813	2	
Wheel Hub & Bearing Assembly				
2017-2015		515153	2	

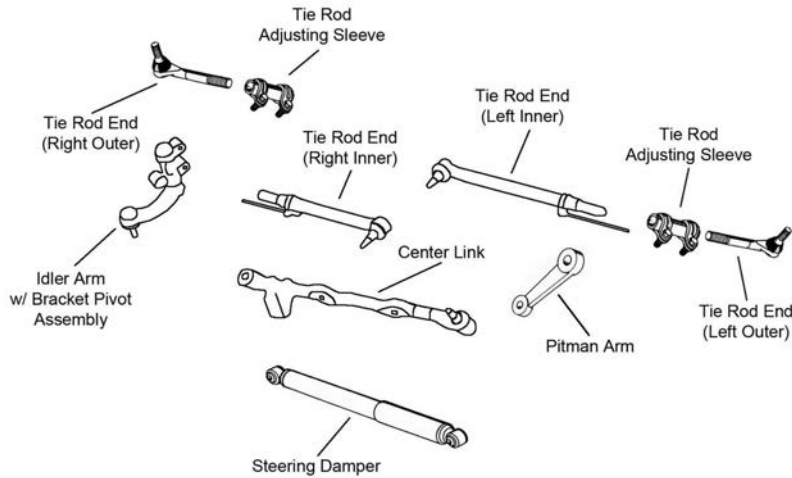
STEERING



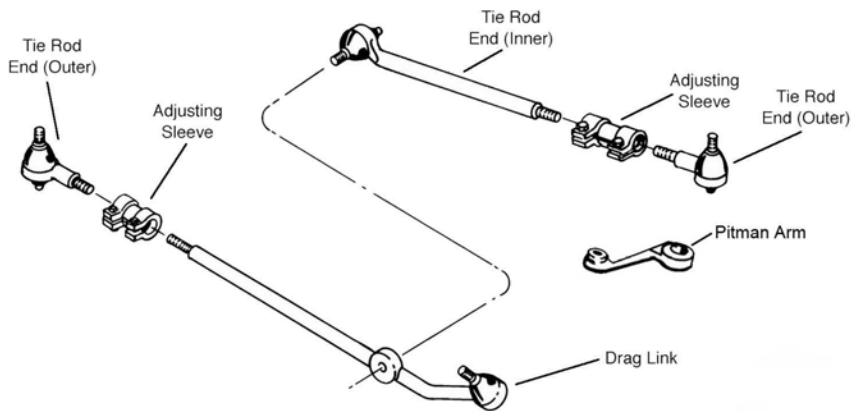
S195

FORD TRUCK-200, 250 Series - 3/4 Ton (Cont.)

STEERING (Cont.)



S196



S286

Year	Model/Application	Part	P/C Qty	Figure	
Econoline E250					
Drag Link Assembly					
2009-2007	(Powdered Metal Gusher Brg. For Better Lubrication)	DS300003 ‡	1	S286	
Pitman Arm					
2009-2005	36 Teeth, (MOOG Engineered Steel Composition Enhances Strength)	K80785 ‡	1	S286	
Tie Rod Adjusting Sleeve					
2009-2008	(Coated For Corrosion Resistance)	ES2012S ‡	2	S286	
2007-1997	(Coated For Corrosion Resistance)	Left	ES2079S	1	S286
		Right	ES2012S ‡	1	S286
Tie Rod End					
2009-2008	(Powdered Metal Gusher Brg. For Better Lubrication)	Left Outer	ES800402 ‡	1	S286
		Left Inner	ES800481 ‡	1	S286
2009-2007	(Powdered Metal Gusher Brg. For Better Lubrication)	Right Outer	ES800401 ‡	1	S286
		Right Inner	DS300003 ‡	1	S286
2007	(Powdered Metal Gusher Brg. For Better Lubrication)	Left Outer	ES800523 ‡	1	S286
		Left Inner	ES800434 ‡	1	S286
Econoline E250 Super Duty					
Drag Link Assembly					
2014-2007	(Powdered Metal Gusher Brg. For Better Lubrication)	DS300003 ‡	1	S286	
Pitman Arm					
2014-2005	36 Teeth, (MOOG Engineered Steel Composition Enhances Strength)	K80785 ‡	1	S286	
Tie Rod Adjusting Sleeve					
2014-2008	(Coated For Corrosion Resistance)	ES2012S ‡	2	S286	
2007-2000	(Coated For Corrosion Resistance)	Right	ES2012S ‡	1	S286
2007-1999		Left	ES2079S	1	S286
Tie Rod End					
2014-2008	(Powdered Metal Gusher Brg. For Better Lubrication)	Left Outer	ES800402 ‡	1	S286

(Cont.) 200, 250 Series - 3/4 Ton-FORD TRUCK

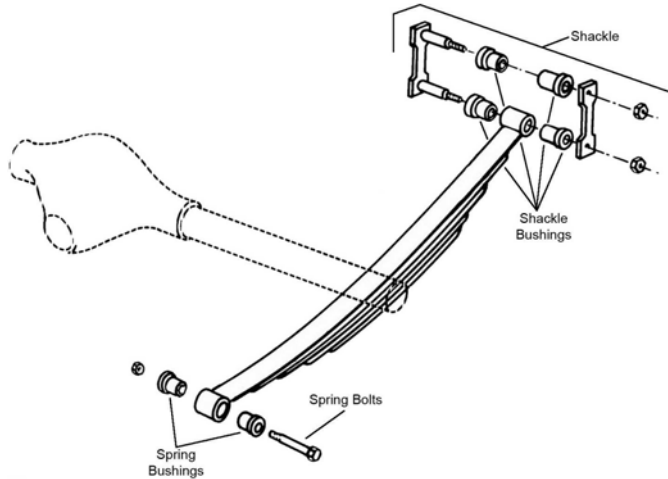
STEERING (Cont.)					
Year	Model/Application	Part	P/C Qty	Figure	
Econoline E250 Super Duty					
Tie Rod End					
2014-2008 (Cont.)	(Powdered Metal Gusher Brg. For Better Lubrication)	Left Inner	ES800481 ‡	1	S286
2014-2007	(Powdered Metal Gusher Brg. For Better Lubrication) (Powdered Metal Gusher Brg. For Better Lubrication)	Right Outer	ES800401 ‡	1	S286
		Right Inner	DS300003 ‡	1	S286
2007	(Powdered Metal Gusher Brg. For Better Lubrication) (Powdered Metal Gusher Brg. For Better Lubrication)	Left Outer	ES800523 ‡	1	S286
		Left Inner	ES800434 ‡	1	S286
Econoline E250 Super Duty Ext.					
Drag Link Assembly					
2011-2008	(Powdered Metal Gusher Brg. For Better Lubrication)		DS300003 ‡	1	S286
Pitman Arm					
2011-2006	36 Teeth, (MOOG Engineered Steel Composition Enhances Strength)		K80785 ‡	1	S286
Tie Rod Adjusting Sleeve					
2007-2006	(Coated For Corrosion Resistance)	Left	ES2079S	1	S286
		Right	ES2012S ‡	1	S286
Tie Rod End					
2011-2008	(Powdered Metal Gusher Brg. For Better Lubrication) (Powdered Metal Gusher Brg. For Better Lubrication)	Left Outer	ES800402 ‡	1	S286
		Left Inner	ES800481 ‡	1	S286
2011-2007	(Powdered Metal Gusher Brg. For Better Lubrication) (Powdered Metal Gusher Brg. For Better Lubrication)	Right Outer	ES800401 ‡	1	S286
		Right Inner	DS300003 ‡	1	S286
2007	(Powdered Metal Gusher Brg. For Better Lubrication) (Powdered Metal Gusher Brg. For Better Lubrication)	Left Outer	ES800523 ‡	1	S286
		Left Inner	ES800434 ‡	1	S286
F250 Super Duty					
Center Link					
2016-2011	Two Wheel Drive (4x2), (Design Allows Ease Of Installation)		DS300038 ‡	1	S196
Drag Link Adjusting Sleeve					
2017-2005	Four Wheel Drive (4X4), (Coated For Corrosion Resistance)		ES3420S ‡	1	S195
2010-2008	Two Wheel Drive (4x2), (Coated For Corrosion Resistance)		ES3426S ‡	2	S286
Drag Link Assembly					
2016-2011	Four Wheel Drive (4X4), 34.16" From Stud Center To End, (Design Allows Ease Of Installation) Four Wheel Drive (4X4), 36.8" From Stud Center To End, (Design Allows Ease Of Installation)	At Pitman Arm	DS300040 ‡	1	S195
		At Pitman Arm	DS300039 ‡	1	S195
2010-2008	Four Wheel Drive (4X4), (Design Allows Ease Of Installation) Two Wheel Drive (4x2), (Design Allows Ease Of Installation)	At Pitman Arm, Inner	DS300037 ‡	1	S195
		Right Inner	DS300053 ‡	1	S286
2007-2005	Four Wheel Drive (4X4), (Full Ball Stud Provides 360 Degrees Of Smooth Rotation) Two Wheel Drive (4x2), (Powdered Metal Gusher Brg. For Better Lubrication)	At Pitman Arm, Inner	DS80749 ‡	1	S195
		Right Inner	ES80752 ‡	1	S286
Idler Arm					
2016-2011	Two Wheel Drive (4x2), (Arm Only) Two Wheel Drive (4x2), (Bracket Pivot Assembly)		K400026	1	S196
			K400027	1	S196
Pitman Arm					
2016-2011			K440028	1	S195, S196
2010-2005	Two Wheel Drive (4x2)		K440024	1	S286
2008-2005	Four Wheel Drive (4X4), (Heavy Duty Design)		K440027 ‡	1	S195
Tie Rod Adjusting Sleeve					
2017-2011	Two Wheel Drive (4x2), (Coated For Corrosion Resistance)		ES3426S ‡	2	S196
2016-2011	Four Wheel Drive (4X4), Except Wide Track Axle, (Design Allows Ease Of Installation) Four Wheel Drive (4X4), Wide Track Axle		ES800977S ‡	1	S195
			ES801203S	1	S195
2010-2008	Two Wheel Drive (4x2), (Coated For Corrosion Resistance)		ES3426S ‡	2	S286
2010-2005	Four Wheel Drive (4X4), (Design Allows Ease Of Installation)		ES800977S ‡	1	S195
2007-2003	Two Wheel Drive (4x2), (Coated For Corrosion Resistance) Two Wheel Drive (4x2), (Coated For Corrosion Resistance)	Left	ES3421S ‡	1	S286
		Right	ES3420S ‡	1	S286
Tie Rod End					
2018	Two Wheel Drive (4x2), (Greaseable Socket Reduces Corrosion/Wear)	Right Outer	ES800777 ‡	1	S196
2018-2011	Two Wheel Drive (4x2), (Greaseable Socket Reduces Corrosion/Wear)	Left Inner	ES800778 ‡	1	S196
2017-2011	Two Wheel Drive (4x2), (Greaseable Socket Reduces Corrosion/Wear)	Right Inner	ES800777 ‡	1	S196
2016-2011	Four Wheel Drive (4X4), 1-3/8" Thread Diameter, (Powdered Metal Gusher Brg. For Better Lubrication) Four Wheel Drive (4X4), 1-3/8" Thread Diameter, (Without Stud, Powdered Metal Gusher Brg. For Better Lubrication) Four Wheel Drive (4X4), 1-9/16" Thread Diameter, (Design Allows Ease Of Installation)	Left Outer	ES80754 ‡	1	S195
		Right Outer	ES80755 ‡	1	S195
		Right Outer	ES800881 ‡	1	S195
		Left Outer	ES800881 ‡	1	S195

FORD TRUCK-200, 250 Series - 3/4 Ton (Cont.)

STEERING (Cont.)

Year	Model/Application	Part	P/C Qty	Figure
F250 Super Duty				
Tie Rod End				
2016-2011 (Cont.)	Four Wheel Drive (4X4), 1-9/16" Thread Diameter, (Without Stud, Powdered Metal Gusher Brg. For Better Lubrication)	Right Outer	ES800880 ‡	1 S195
	Two Wheel Drive (4x2), (Powdered Metal Gusher Brg. For Better Lubrication)	Outer	ES800484 ‡	2 S196
2016-2005	Four Wheel Drive (4X4), (With Stud, Powdered Metal Gusher Brg. For Better Lubrication)	Right Outer	DS300008 ‡	1 S195
2010-2008	Two Wheel Drive (4x2), (Powdered Metal Gusher Brg. For Better Lubrication)	Left Outer	ES800484 ‡	1 S286
	Two Wheel Drive (4x2), (Powdered Metal Gusher Brg. For Better Lubrication)	Right Outer	ES800483 ‡	1 S286
	Two Wheel Drive (4x2), (Powdered Metal Gusher Brg. For Better Lubrication)	Left Inner	ES800465 ‡	1 S286
2010-2005	Four Wheel Drive (4X4), (Powdered Metal Gusher Brg. For Better Lubrication)	Left Outer	ES80754 ‡	1 S195
	Four Wheel Drive (4X4), (Without Stud, Powdered Metal Gusher Brg. For Better Lubrication)	Right Outer	ES80755 ‡	1 S195
2007-2005	Two Wheel Drive (4x2), (Powdered Metal Gusher Brg. For Better Lubrication)	Left Inner	ES80753 ‡	1 S286
2007-2003	Two Wheel Drive (4x2), (Powdered Metal Gusher Brg. For Better Lubrication)	Left Outer	ES3418 ‡	1 S286
	Two Wheel Drive (4x2), (Powdered Metal Gusher Brg. For Better Lubrication)	Right Outer	ES3417T ‡	1 S286
Transit 250				
Tie Rod End				
2017-2015		Outer	ES801219	2
		Inner	EV801332 ‡	2

REAR SUSPENSION



R309

Year	Model/Application	Part	P/C Qty	Figure
Econoline E250				
Leaf Spring Bushing				
2009-1997	1.562" Outside Diameter	Front	K201300	2 R309
Leaf Spring Shackle				
2009-1997	(Contains Shackle, Nuts, Bolts & Bushing)	Rear	K150411	2 R309
Sway Bar Link				
2009-2008	12.9" Length, (Link And Bushing Kit, Improves Upon OE Design)		K80015 ‡	2
Econoline E250 Super Duty				
Leaf Spring Bushing				
2014-1999	1.562" Outside Diameter	Front	K201300	2 R309
Leaf Spring Shackle				
2014-1999	(Contains Shackle, Nuts, Bolts & Bushing)	Rear	K150411	2 R309
Sway Bar Bushing				
2014-2006	(Improved Design Bushing With Premium Rubber Material And Synthetic Fabric Lining Lasts Longer And Eliminates Noise) (Standard Design)	To Frame	K201624 ‡	1
		To Frame	K8655	1
Sway Bar Link				
2014-2006	12.9" Length, (Link And Bushing Kit, Improves Upon OE Design)		K80015 ‡	2
Econoline E250 Super Duty Ext.				
Leaf Spring Bushing				
2011-2006	1.562" Outside Diameter	Front	K201300	2 R309

(Cont.) 200, 250 Series - 3/4 Ton-FORD TRUCK

REAR SUSPENSION (Cont.)

Year	Model/Application	Part	P/C Qty	Figure
Econoline E250 Super Duty Ext.				
Leaf Spring Shackle				
2011-2006	(Contains Shackle, Nuts, Bolts & Bushing)	Rear	K150411	2 R309
Sway Bar Bushing				
2011-2006	(Improved Design Bushing With Premium Rubber Material And Synthetic Fabric Lining Lasts Longer And Eliminates Noise)	To Frame	K201624 ‡	1
	(Standard Design)	To Frame	K8655	1
Sway Bar Link				
2011-2006	12.9" Length, (Link And Bushing Kit, Improves Upon OE Design)		K80015 ‡	2
F250 Super Duty				
Leaf Spring Shackle				
2007-2005	Wide Frame, Single Rear Wheels, (Contains Hardware)		K150417	2
Sway Bar Bushing				
2017	Diesel, 1-1/4" Sway Bar Diameter, (Improved Design Bushing With Premium Rubber Material And Synthetic Fabric Lining Lasts Longer And Eliminates Noise)	To Frame	K201626 ‡	1
	Diesel, 1-1/4" Sway Bar Diameter, (Standard Design)	To Frame	K80072	1
	Flex Fuel, 1-1/4" Sway Bar Diameter, (Improved Design Bushing With Premium Rubber Material And Synthetic Fabric Lining Lasts Longer And Eliminates Noise)	To Frame	K201626 ‡	1
	Flex Fuel, 1-1/4" Sway Bar Diameter, (Standard Design)	To Frame	K80072	1
2016-2008	Four Wheel Drive (4X4)	To Frame	K201452	1
	Two Wheel Drive (4x2)	To Frame	K201450	1
2007-2003	1-3/16" Sway Bar Diameter, (Improved Design Bushing With Premium Rubber Material And Synthetic Fabric Lining Lasts Longer And Eliminates Noise)	To Frame	K201625 ‡	1
	1-3/16" Sway Bar Diameter, (Standard Design)	To Frame	K8656	1
	Two Wheel Drive (4x2), 1-1/16" Sway Bar Diameter	To Frame	K80093	1
Sway Bar Link				
2017	7.93" Center To Center		K80268 ‡	2
	10.39" Center To Center		K80575	2
2016-2014	Except Camper Package, Except Snow Plow Package, 13.7" Center To Center, (Full Ball Stud Provides 360 Degrees Of Smooth Rotation)		K750261 ‡	2
2013	13.7" Center To Center, (Full Ball Stud Provides 360 Degrees Of Smooth Rotation)		K750261 ‡	2
2012-2003	Four Wheel Drive (4X4), 13.7" Center To Center, (Full Ball Stud Provides 360 Degrees Of Smooth Rotation)		K750261 ‡	2
	Two Wheel Drive (4x2), 12" Center To Center, (Full Ball Stud Provides 360 Degrees Of Smooth Rotation)		K80269 ‡	2
Sway Bar Repair Kit				
2016-2011	(Bolts Not Included, Contains Thermoplastic Bushing For Both Ends Of Link)		K80085	1
2010-2003	(Bolts Not Included, Contains Thermoplastic Bushing For Both Ends Of Link)		K80086	1

300, 350 Series - 1 Ton-FORD TRUCK

FRONT SUSPENSION

